


Part number

# TM 3243 SP



Interlocked switched socket-outlet, TM series, 2 poles + PE, 4 h (yellow), 32 A, 100 ÷ 130 V, without fuse-carrier, with base box

#### Product description

<b>Product type</b>	Interlocked switched socket-outlet
<b>Series</b>	TM..SP/KSP
<b>N. of poles</b>	2 poles + 
<b>Clock position</b>	4
<b>Size</b>	145 x 565 x 18 mm
<b>Specification</b>	Without fuse-carrier With base box

#### Technical data

<b>Current</b>	32 A
<b>Voltage</b>	100 ÷ 130 V
<b>IP degree of protection</b>	IP66 / IP67

#### Further technical details

<b>Weight</b>	2.860,00 g
<b>Operating temperature range (min, max)</b>	-25°C ... +40°C
<b>UL 94 flammability rating</b>	V-2
<b>IK rating (impact degree of protection)</b>	IK10

#### Material properties

<b>Colour</b>	RAL 7012 grey, RAL 1021 yellow
---------------	--------------------------------

#### Approvals / Standards

<b>Reference standard</b>	EN 60309-1, -2 e -4
---------------------------	---------------------

#### General ordering information

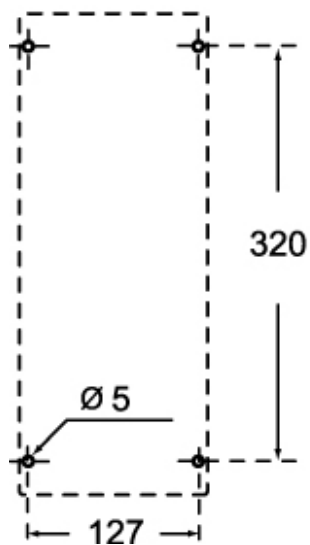
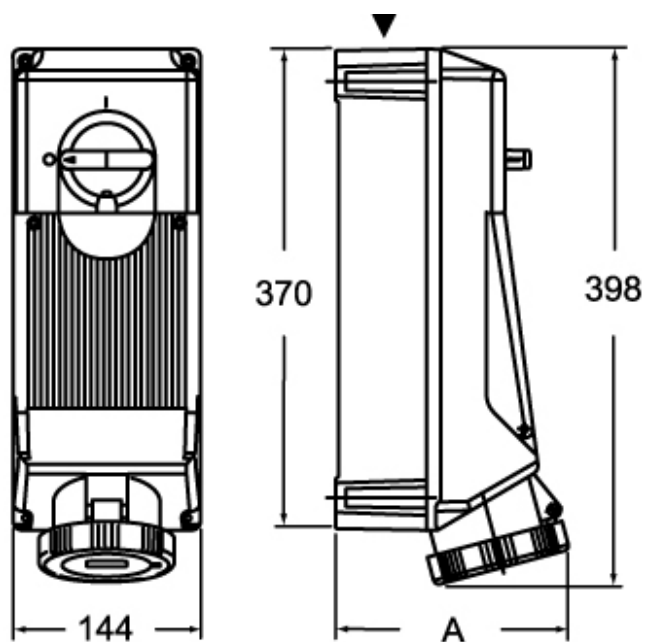
<b>EAN13 code</b>	8015747100465
-------------------	---------------

Part number

# TM 3243 SP



Catalogue drawings



	<b>A</b>
<b>2P+⊕</b>	162
<b>3P+⊕</b>	162
<b>3P+N+⊕</b>	169