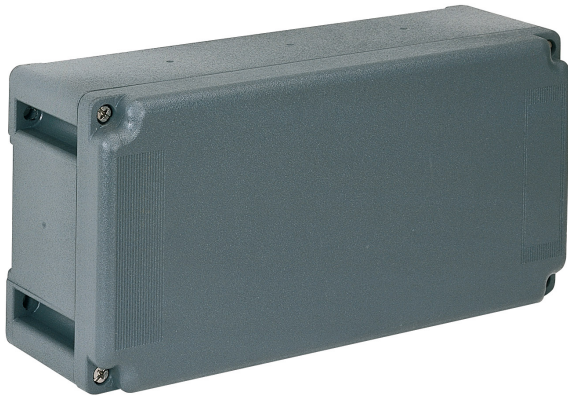


Part number

# TM 2614 DB



Box, TM series, with fixed cover, for 1 TM 1145 TB plate + 1 TM 1456 TB plate

Product description		Material properties	
<b>Product type</b>	Box	<b>Colour</b>	RAL 7012 grey
<b>Series</b>	TM		Compliant with exemption 6(c): copper alloy containing up to 4% lead by weight
<b>Specification</b>	With fixed cover For 1 TM 1145 TB plate + 1 TM 1456 TB plate	<b>RoHs conformity</b>	
<b>Technical data</b>		<b>China RoHs - EFUP</b>	50
<b>IP degree of protection</b>	IP66 / IP67		Yes
<b>Further technical details</b>		<b>REACH SVHC substances</b>	Lead
<b>Weight</b>	710,00 g	<b>SCIP number</b>	B0214dad-d2d9-4e91-a5b4-f4c9b4612083
<b>Operating temperature range (min, max)</b>	-25°C ... +40°C	<b>General ordering information</b>	
<b>IK rating (impact degree of protection)</b>	IK10	<b>EAN13 code</b>	8015747101424
		<b>Packaging Information</b>	
		<b>Packaging length</b>	270,00 mm
		<b>Packaging height</b>	185,00 mm
		<b>Packaging width</b>	210,00 mm
		<b>Packaging weight</b>	1,42 kg
		<b>Packaging volume</b>	10,49 dm <sup>3</sup>
		<b>Packaging description</b>	Carton box
		<b>Packaging quantity</b>	2 Pcs
		<b>Packaging EAN code</b>	8015747101622
		<b>Sub-packaging weight</b>	0,71 kg
		<b>Sub-packaging description</b>	Plastic packaging
		<b>Sub-packaging quantity</b>	1 Pcs
		<b>Sub-packaging EAN barcode</b>	8015747101639

# Part number TM 2614 DB



## Catalogue drawings

### TM complementary parts and accessories for groups



- Compliant with international standard IEC 60670 (Italian standard CEI 23-48)
- In insulating self-extinguishing thermoplastic material RAL 7012 grey
- Junction boxes suitable for the assembly of fixing plates or DIN-rail
- Fixing plates in zinc-plated steel with fixing screws
- Blind plug-type, fixed cover
- With Italian Quality Mark (CEI 23-48)

#### Junction boxes - IP66/IP67



#### Junction boxes - IP66/IP67



Description

Part No.

Part No.

For **TM 1145 TB plate**  
- IP66/67 degree of protection (EN 60529)  
For **TM 1456 TB plate**  
- IP66/67 degree of protection (EN 60529)

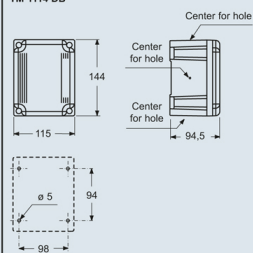
**TM 1114 DB** ☉  
**TM 1414 DB** ☉

For **2 TM 1145 TB plates**  
- IP66/67 degree of protection (EN 60529)  
For **1 TM 1145 TB plate + 1 TM 1456 TB plate**  
- IP66/67 degree of protection (EN 60529)  
For **2 TM 1456 TB plates**  
- IP66/67 degree of protection (EN 60529)

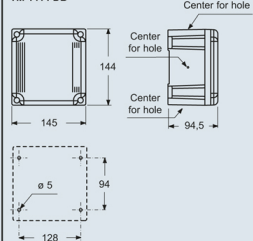
**TM 2314 DB** ☉  
**TM 2614 DB** ☉  
**TM 2914 DB** ☉

dimensions in mm

**TM 1114 DB**

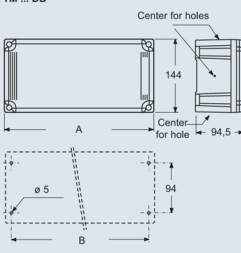


**TM 1414 DB**



dimensions in mm

**TM ... DB**



Part No.	A	B
<b>TM 2314 DB</b>	230	213
<b>TM 2614 DB</b>	280	243
<b>TM 2914 DB</b>	290	273

Dimensions indicated are not binding and may be changed without prior notice.