


Part number

SQV 1695



Interlocked switched socket-outlet, SQV series, 3 poles + N + PE, 9 h (blue), 16 A, 120/208 ÷ 144/250 V, sectionable fuse carrier 10 x 38 mm

| Product description | |
|--|---|
| Product type | Interlocked switched socket-outlet |
| Series | SQV |
| N. of poles | 3 poles + N +  |
| Clock position | 9 |
| Size | Socket fixing centre distance 88 x 230 mm |
| Specification | Sectionable fuse carrier 10 x 38 mm |
| Technical data | |
| Current | 16 A |
| Voltage | 120/208 ÷ 144/250 V |
| IP degree of protection | IP44 |
| Further technical details | |
| Weight | 572,00 g |
| Operating temperature range (min, max) | -25°C ... +40°C |
| IK rating (impact degree of protection) | IK08 |

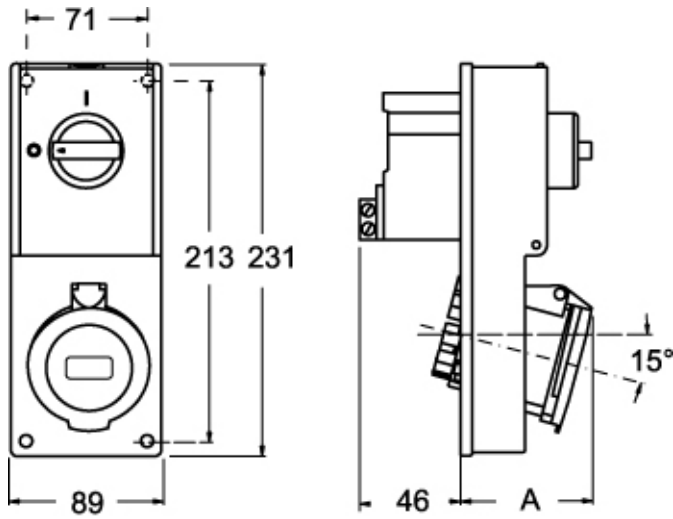
| Material properties | |
|----------------------------------|--|
| Colour | RAL 7035 grey, RAL 5015 blue |
| RoHs conformity | Compliant with exemption 6(c): copper alloy containing up to 4% lead by weight |
| China RoHs - EFUP | 50 |
| REACH SVHC substances | Yes Lead |
| SCIP number | F6799547-ab84-42f2-938f-233ba663766d |
| Approvals / Standards | |
| Reference standard | EN 60309-1, -2 e -4 |
| General ordering information | |
| EAN13 code | 8015747088206 |
| Packaging Information | |
| Sub-packaging length | 116,00 mm |
| Sub-packaging height | 103,00 mm |
| Sub-packaging width | 230,00 mm |
| Sub-packaging weight | 0,57 kg |
| Sub-packaging volume | 2,75 dm ³ |
| Sub-packaging description | Carton box |
| Sub-packaging quantity | 1 Pcs |
| Sub-packaging EAN barcode | 8015747088213 |

Part number

SQV 1695



Catalogue drawings



Catalogue drawings



| SQV | | A |
|-----|--------|----|
| 16A | 2P+⊕ | 64 |
| | 3P+⊕ | 65 |
| | 3P+N+⊕ | 67 |