


Part number

SQE 3275.5



Interlocked switched socket-outlet, SQE series, 3 poles + N + PE, 7 h (black), 32 A, 277/480 ÷ 288/500 V, without fuse-carrier

Product description

| | |
|-----------------------|---|
| Product type | Interlocked switched socket-outlet |
| Series | SQE |
| N. of poles | 3 poles + N +  |
| Clock position | 7 |
| Specification | Without fuse-carrier |

Technical data

| | |
|--------------------------------|---------------------|
| Current | 32 A |
| Voltage | 277/480 ÷ 288/500 V |
| IP degree of protection | IP55 |

Further technical details

| | |
|--|-----------------|
| Weight | 690,00 g |
| Operating temperature range (min, max) | -25°C ... +40°C |
| IK rating (impact degree of protection) | IK08 |

Material properties

| | |
|---------------|-------------------------------|
| Colour | RAL 7035 grey, RAL 9005 black |
|---------------|-------------------------------|

Approvals / Standards

| | |
|---------------------------|---------------------|
| Reference standard | EN 60309-1, -2 e -4 |
|---------------------------|---------------------|

General ordering information

| | |
|-------------------|---------------|
| EAN13 code | 8015747087001 |
|-------------------|---------------|

Packaging Information

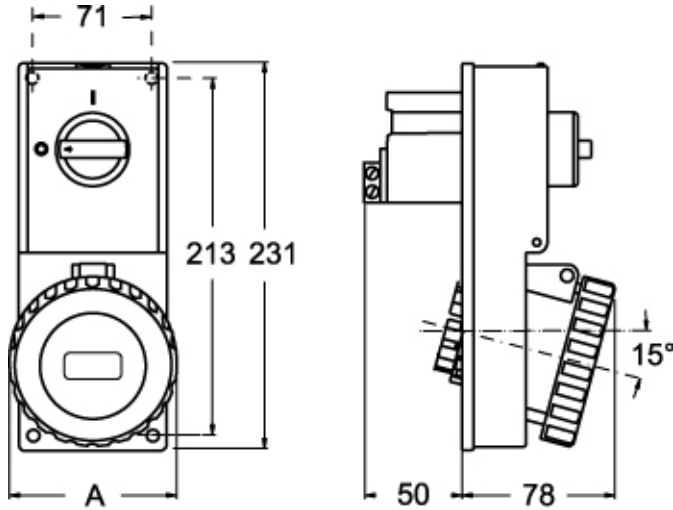
| | |
|----------------------------------|---------------|
| Sub-packaging weight | 0,69 kg |
| Sub-packaging description | Carton box |
| Sub-packaging quantity | 1 Pcs |
| Sub-packaging EAN barcode | 8015747109406 |

Part number

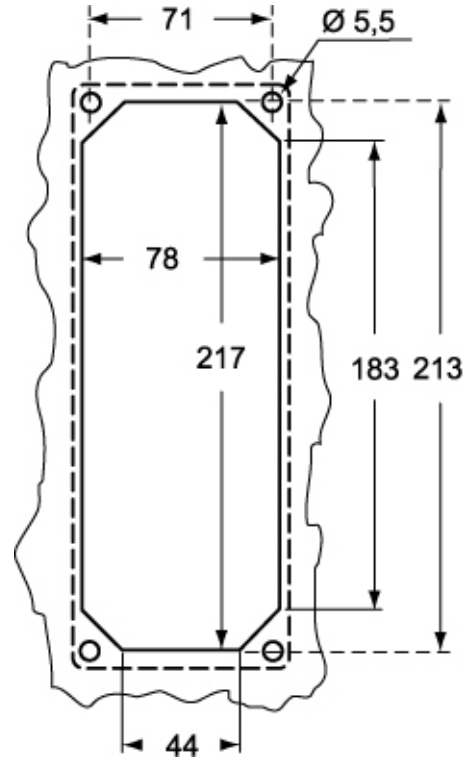
SQE 3275.5



Catalogue drawings



Catalogue drawings



| SQE.5 | | A |
|-------|--------|-----|
| 32A | 2P+⊕ | 92 |
| | 3P+⊕ | 92 |
| | 3P+N+⊕ | 100 |