

Part number

SIP 1665 SI



Flush-mounting plug, PLUSO series, 3 poles + N + PE, 6 h (red), 16 A, 200/346 ÷ 240/415 V, with phase inverter

Product description		Material properties	
Product type	Plug Flush-mounting	Colour	RAL 7035 grey, RAL 3000 red
Series	SIP...SI, PLUSO	RoHs conformity	Compliant with exemption 6(c): copper alloy containing up to 4% lead by weight
Connection type	Screw terminal connection	China RoHs - EFUP	50
N. of poles	3 poles + N +	REACH SVHC substances	Yes Lead
Clock position	6	SCIP number	Ca7de37f-add8-4b77-9861-279c94903ade
Specification	With phase inverter	Approvals / Standards	
Technical data		Reference standard	EN 60309-1 and -2
Current	16 A	General ordering information	
Voltage	200/346 ÷ 240/415 V	EAN13 code	8015747083850
IP degree of protection	IP44	Packaging Information	
Further technical details		Packaging length	330,00 mm
Weight	186,00 g	Packaging height	175,00 mm
Operating temperature range (min, max)	-25°C ... +40°C	Packaging width	295,00 mm
		Packaging weight	2,22 kg
		Packaging volume	17,04 dm ³
		Packaging description	Carton box
		Packaging quantity	10 Pcs
		Packaging EAN code	8015747083867

Part number

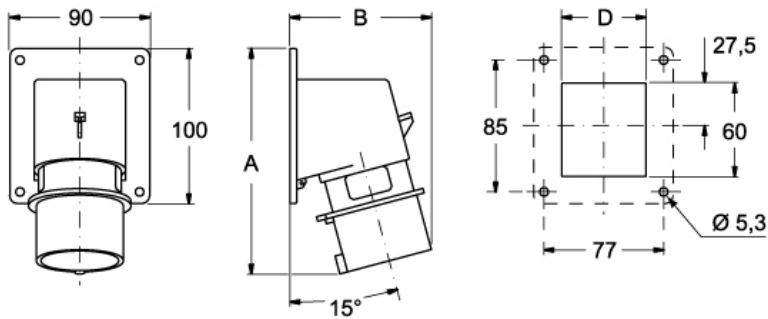
SIP 1665 SI



Catalogue drawings

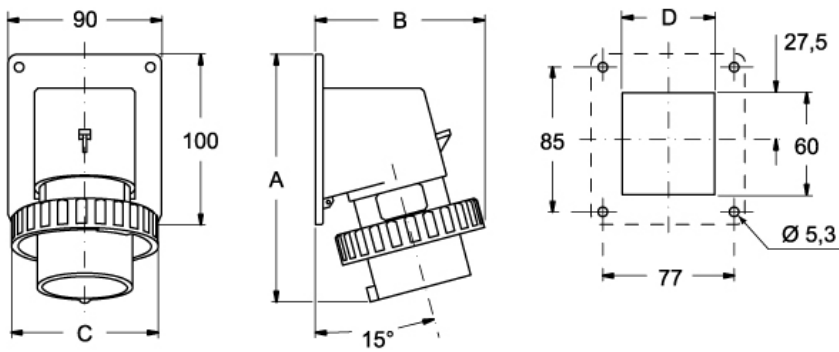
Catalogue drawings

SIP ... SI



	A	B	C
16A	146	93	54
32A	160	106	62

SIPW ... SI



	A	B	C	D
16A	146	99	86	54
32A	160	113	100	62