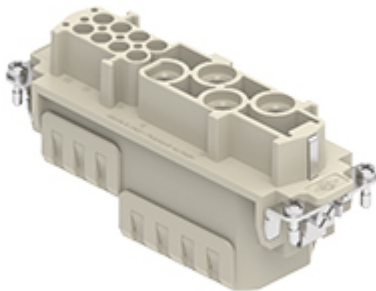


Part number

RXCF 4/8



Female insert, RXC series, crimp connection, 4 + 8 poles + PE, 80 A 400 V 6 kV 3 / 16 A 230/400 V 4 kV 3, size "104.27", HNM - High Number of Matings version

Product description	
Product type	Insert
Series	RXC
Connection type	Crimp connection
Gender	Female
N. of poles	4 poles + \oplus
Auxiliary poles	8 poles
Size	Size 104.27
Specification	HNM - High Number of Matings version
Technical data	
Current	80 A
Voltage	400 V
Rated impulse withstand voltage	6 kV
Pollution degree	3
Rated voltage according to UL/CSA	600 V
Wire cross-section	6,00 mm ² - 25,00 mm ²
AWG size	10 - 3
IP degree of protection	IP20 without enclosure, IP65/IP66/IP68/IP69 with enclosure
Further technical details	
Characteristics according to EN 61984	80 A 830 V 8 kV 3 / 16 A 400 V 6 kV 3
Mating cycles	≥ 10000
Insulation resistance	≥ 10 GΩ
Contact resistance	≤ 0,3 mΩ (4 poles), ≤ 1 mΩ (8 poles)
Weight	100,80 g
Operating temperature range (min, max)	-40°C...+125°C
UL 94 flammability rating	V-0

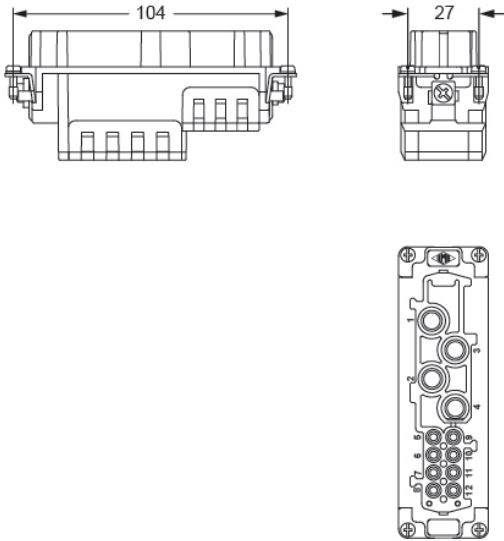
Material properties	
Main material	Polycarbonate (PC)
Colour	RAL 7032 grey
RoHs conformity	Compliant
China RoHs - EFUP	E
REACH SVHC substances	No
General ordering information	
EAN13 code	8015747283939
eCl@ss 8.1	27440205
ETIM 7.0	EC000438
Packaging Information	
Packaging length	270,00 mm
Packaging height	185,00 mm
Packaging width	210,00 mm
Packaging weight	3,24 kg
Packaging volume	10,49 dm ³
Packaging description	Carton box
Packaging quantity	30 Pcs
Packaging EAN code	8015747283991
Sub-packaging length	113,00 mm
Sub-packaging height	36,00 mm
Sub-packaging width	180,00 mm
Sub-packaging weight	0,54 kg
Sub-packaging volume	0,73 dm ³
Sub-packaging description	Carton tray
Sub-packaging quantity	5 Pcs
Sub-packaging EAN barcode	8015747284004

Part number
RXCF 4/8



Catalogue drawings

Derating curves



RXC 4/8 poles connector inserts
Maximum current load derating diagram

