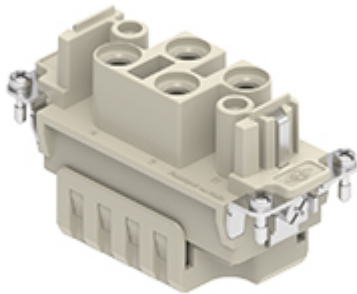


Part number

# RXCF 4/2



Female insert, RXC series, crimp connection, 4 + 2 poles + PE, 80 A 830 V 8 kV 3 / 16 A 400 V 6 kV 3, size "77.27", HNM - High Number of Matings version

| Product description                           |  |
|---|--|
| <b>Product type</b>                           | Insert   |
| <b>Series</b>                                 | RXC  |
| <b>Connection type</b>                        | Crimp connection   |
| <b>Gender</b>                                 | Female   |
| <b>N. of poles</b>                            | 4 poles + $\oplus$   |
| <b>Auxiliary poles</b>                        | 2 poles  |
| <b>Size</b>                                   | Size 77.27   |
| <b>Specification</b>                          | HNM - High Number of Matings version                       |
| Technical data                                |  |
| <b>Current</b>                                | 80 A   |
| <b>Voltage</b>                                | 830 V  |
| <b>Rated impulse withstand voltage</b>        | 8 kV   |
| <b>Pollution degree</b>                       | 3  |
| <b>Rated voltage according to UL/CSA</b>      | 600 V  |
| <b>Wire cross-section</b>                     | 6,00 mm <sup>2</sup> - 25,00 mm <sup>2</sup>               |
| <b>AWG size</b>                               | 10 - 3   |
| <b>IP degree of protection</b>                | IP20 without enclosure, IP65/IP66/IP68/IP69 with enclosure |
| Further technical details                     |  |
| <b>Characteristics according to EN 61984</b>  | 80 A 830 V 8 kV 3 / 16 A 400 V 6 kV 3                      |
| <b>Mating cycles</b>                          | ≥ 10000  |
| <b>Insulation resistance</b>                  | ≥ 10 GΩ  |
| <b>Contact resistance</b>                     | ≤ 0,3 mΩ (4 poles), ≤ 1 mΩ (2 poles)                       |
| <b>Weight</b>                                 | 72,30 g  |
| <b>Operating temperature range (min, max)</b> | -40°C...+125°C   |
| <b>UL 94 flammability rating</b>              | V-0  |

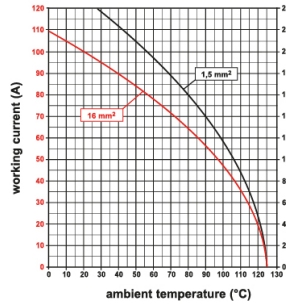
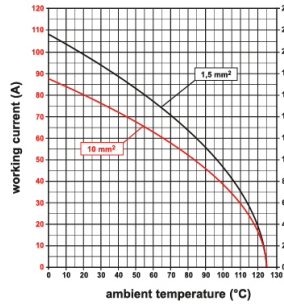
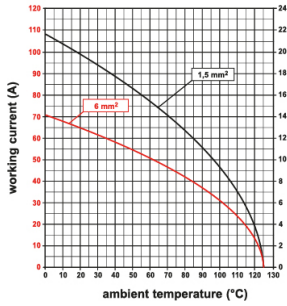
| Material properties              |                      |
|----------------------------------|----------------------|
| <b>Main material</b>             | Polycarbonate (PC)   |
| <b>Colour</b>                    | RAL 7032 grey        |
| <b>RoHs conformity</b>           | Compliant            |
| <b>China RoHs - EFUP</b>         | E                    |
| <b>REACH SVHC substances</b>     | No                   |
| General ordering information     |                      |
| <b>EAN13 code</b>                | 8015747283922        |
| <b>eCl@ss 8.1</b>                | 27440205             |
| <b>ETIM 7.0</b>                  | EC000438             |
| Packaging Information            |                      |
| <b>Packaging length</b>          | 245,00 mm            |
| <b>Packaging height</b>          | 165,00 mm            |
| <b>Packaging width</b>           | 215,00 mm            |
| <b>Packaging weight</b>          | 2,34 kg              |
| <b>Packaging volume</b>          | 8,69 dm <sup>3</sup> |
| <b>Packaging description</b>     | Carton box           |
| <b>Packaging quantity</b>        | 30 Pcs               |
| <b>Packaging EAN code</b>        | 8015747283977        |
| <b>Sub-packaging length</b>      | 87,00 mm             |
| <b>Sub-packaging height</b>      | 36,00 mm             |
| <b>Sub-packaging width</b>       | 180,00 mm            |
| <b>Sub-packaging weight</b>      | 0,39 kg              |
| <b>Sub-packaging volume</b>      | 0,56 dm <sup>3</sup> |
| <b>Sub-packaging description</b> | Carton tray          |
| <b>Sub-packaging quantity</b>    | 5 Pcs                |
| <b>Sub-packaging EAN barcode</b> | 8015747283984        |

# Part number RXCF 4/2



## Derating curves

RXC 4/2 poles connector inserts  
Maximum current load derating diagram



## Catalogue drawings

