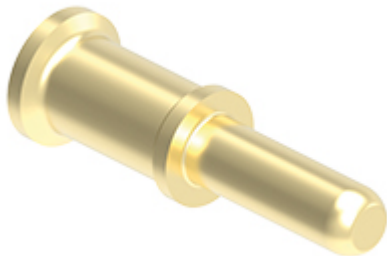


Part number

# RX7M2D 6.0



Male crimp contact, RX7 series, 70 A, turned gold plated, wire cross section 6 mm<sup>2</sup>, AWG 10, HNM - High Number of Matings version

Product description	
<b>Product type</b>	Crimp contact
<b>Series</b>	RX7
<b>Gender</b>	Male
<b>Specification</b>	HNM - High Number of Matings version
Technical data	
<b>Current</b>	70 A
<b>Wire cross-section</b>	6,00 mm <sup>2</sup>
<b>AWG size</b>	10
<b>Contact type</b>	Turned gold plated
Further technical details	
<b>Mating cycles</b>	≥ 10000
<b>Contact resistance</b>	≤ 0,5 mΩ
<b>Weight</b>	10,00 g
<b>Operating temperature range (min, max)</b>	-40°C ... +125°C

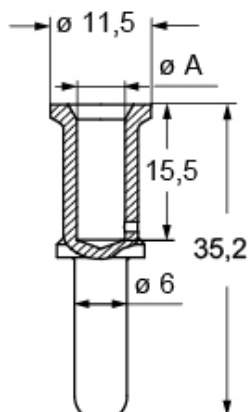
Material properties	
<b>Main material</b>	Copper alloy
<b>RoHs conformity</b>	Compliant with exemption 6(c): copper alloy containing up to 4% lead by weight
<b>China RoHs - EFUP</b>	50
<b>REACH SVHC substances</b>	Yes Lead
<b>SCIP number</b>	C0979fba-9907-458f-a94a-db781440f273
General ordering information	
<b>EAN13 code</b>	8015747181280
<b>eCl@ss 8.1</b>	27440204
<b>ETIM 7.0</b>	EC000796
Packaging Information	
<b>Sub-packaging length</b>	50,00 mm
<b>Sub-packaging height</b>	44,00 mm
<b>Sub-packaging width</b>	50,00 mm
<b>Sub-packaging weight</b>	0,16 kg
<b>Sub-packaging volume</b>	0,11 dm <sup>3</sup>
<b>Sub-packaging description</b>	Plastic box
<b>Sub-packaging quantity</b>	16 Pcs
<b>Sub-packaging EAN barcode</b>	8015747181310

Part number

# RX7M2D 6.0



Catalogue drawings



conductor section (mm <sup>2</sup> )	conductor slot $\varnothing A$ (mm)	conductor stripping length (mm)
6	3,5	15
10	4,3	15
16	5,5	15
16 (XF)	6,1	15
25	7,0	15