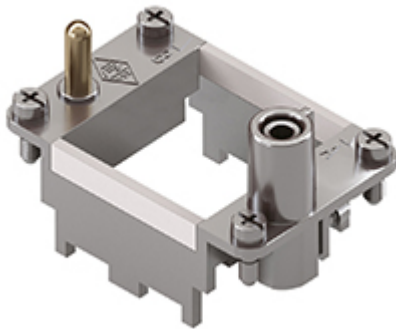


Part number

RX 02 TM



Frame for Mixo inserts, 2 modules, for 2 modular inserts and enclosures size "44.27", frame for hoods, HNM - High Number of Matings version

| Product description | |
|---------------------------|--|
| Product type | Frame for Mixo inserts |
| Size | 2 modules |
| Specification | For 2 modular inserts and enclosures size 44.27 Frame for hoods, HNM - High Number of Matings version |
| Further technical details | |
| Weight | 45,00 g |

| Material properties | |
|----------------------------------|--|
| RoHs conformity | Compliant with exemption 6(c): copper alloy containing up to 4% lead by weight |
| China RoHs - EFUP | 50 |
| REACH SVHC substances | Yes Lead |
| SCIP number | C0556c52-3b1b-4ffb-87d5-58c9db853c44 |
| Approvals / Standards | |
| Certifications | DNV |
| UL | ECBT2 |
| cUL | ECBT8 |
| General ordering information | |
| EAN13 code | 8015747239714 |
| eCl@ss 8.1 | 27440210 |
| ETIM 7.0 | EC002310 |
| Packaging Information | |
| Packaging length | 270,00 mm |
| Packaging height | 75,00 mm |
| Packaging width | 180,00 mm |
| Packaging weight | 2,80 kg |
| Packaging volume | 3,65 dm ³ |
| Packaging description | Carton box |
| Packaging quantity | 60 Pcs |
| Packaging EAN code | 8015747265485 |
| Sub-packaging length | 104,00 mm |
| Sub-packaging height | 36,00 mm |
| Sub-packaging width | 180,00 mm |
| Sub-packaging weight | 0,47 kg |
| Sub-packaging volume | 0,67 dm ³ |
| Sub-packaging description | Carton tray |
| Sub-packaging quantity | 10 Pcs |
| Sub-packaging EAN barcode | 8015747265492 |

Part number

RX 02 TM



Catalogue drawings



| part No. | A (mm) | for housings size |
|----------------------|--------|-------------------|
| RX 02 TM / TF | 44 | 44,27 |
| RX 03 TM / TF | 57 | 57,27 |
| RX 04 TM / TF | 77,5 | 77,27 and 77,62 |
| RX 06 TM / TF | 104 | 104,27 and 104,62 |