

Part number

# RVP 10 L220



Surface mounting housing, HNM - High Number of Matings series, with 1 lever, M20 x 2 cable entry, size "57.27"

#### Product description

<b>Product type</b>	Surface mounting housing
<b>Series</b>	HNM - High Number of Matings
<b>Closing type</b>	With 1 lever
<b>Size</b>	Size 57.27
<b>Cable entry</b>	With cable entry M20 x 2

#### Technical data

**IP degree of protection** IP65 / IP66 / IP69

#### Further technical details

**Operating temperature range (min, max)** -40°C...+125°C

#### Material properties

<b>Other materials</b>	Lever: Stainless steel Gasket: NBR
<b>Colour</b>	RAL 7040 grey
<b>RoHs conformity</b>	Compliant
<b>China RoHs - EFUP</b>	E
<b>REACH SVHC substances</b>	No

#### Approvals / Standards

<b>UL</b>	ECBT2
<b>cUL</b>	ECBT8

#### General ordering information

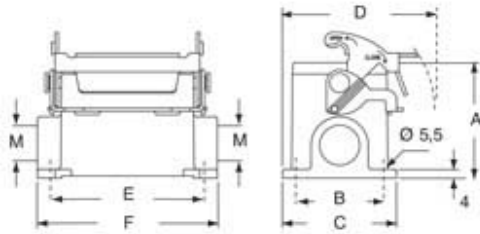
<b>EAN13 code</b>	8015747255806
<b>eCl@ss 8.1</b>	27440202
<b>ETIM 7.0</b>	EC000437

Part number

# RVP 10 L220



## Catalogue drawings



type	A	B	C	D	E	F
RVP L	57	40	52	73	82	93,5
RVAP L	73	45	57	75,5	82	93,5