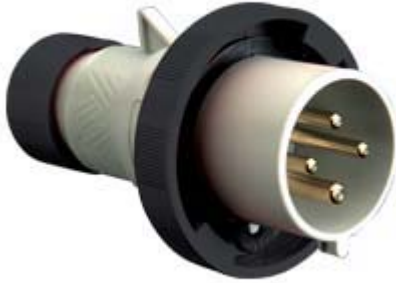



Part number

# PEW 3255 SV



Mobile plug, PLUSO series, 3 poles + N + PE, 5 h (black), 32 A, 347/600 ÷ 400/690 V, straight

Product description		Material properties	
<b>Product type</b>	Plug Mobile	<b>Colour</b>	RAL 7035 grey, RAL 9005 black
<b>Series</b>	PEW...SV, PLUSO	<b>RoHs conformity</b>	Compliant with exemption 6(c): copper alloy containing up to 4% lead by weight
<b>N. of poles</b>	3 poles + N + 	<b>China RoHs - EFUP</b>	50
<b>Clock position</b>	5	<b>REACH SVHC substances</b>	Yes Lead
<b>Specification</b>	Straight	<b>SCIP number</b>	Ca7de37f-add8-4b77-9861-279c94903ade
Technical data		Approvals / Standards	
<b>Current</b>	32 A	<b>Reference standard</b>	EN 60309-1 and -2
<b>Voltage</b>	347/600 ÷ 400/690 V	General ordering information	
<b>IP degree of protection</b>	IP67	<b>EAN13 code</b>	8015747075206
Further technical details		Packaging Information	
<b>Weight</b>	250,00 g	<b>Packaging length</b>	330,00 mm
<b>Operating temperature range (min, max)</b>	-25°C ... +40°C	<b>Packaging height</b>	175,00 mm
		<b>Packaging width</b>	295,00 mm
		<b>Packaging weight</b>	2,80 kg
		<b>Packaging volume</b>	17,04 dm <sup>3</sup>
		<b>Packaging description</b>	Carton box
		<b>Packaging quantity</b>	10 Pcs
		<b>Packaging EAN code</b>	8015747075213

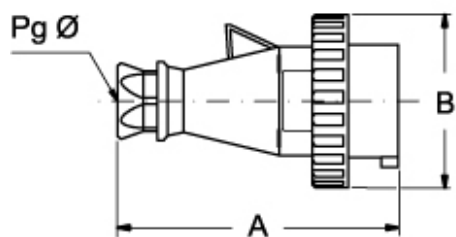
Part number

# PEW 3255 SV



Catalogue drawings

(16 / 32A) PEW ... SV



PEW ... SV		A	B	Pg Ø
<b>16A</b>	2P+⊕	137	70	16
	3P+⊕	142	78	16
	3P+N+⊕	150	86	21
<b>32A</b>	2P+⊕	170	92	21
	3P+⊕	170	92	21
	3P+N+⊕	175	99,5	21