


Part number

# PEW 1695 SM



Wall-mounting plug, PLUSO series, 3 poles + N + PE, 9 h (blue), 16 A, 120/208 ÷ 144/250 V

#### Product description

<b>Product type</b>	Plug Wall-mounting
<b>Series</b>	PEW...SM, PLUSO
<b>N. of poles</b>	3 poles + N + 
<b>Clock position</b>	9

#### Technical data

<b>Current</b>	16 A
<b>Voltage</b>	120/208 ÷ 144/250 V
<b>IP degree of protection</b>	IP67

#### Further technical details

<b>Weight</b>	418,00 g
<b>Operating temperature range (min, max)</b>	-25°C ... +40°C

#### Material properties

<b>Colour</b>	RAL 7035 grey, RAL 5015 blue
<b>RoHs conformity</b>	Compliant with exemption 6(c): copper alloy containing up to 4% lead by weight
<b>China RoHs - EFUP</b>	50
<b>REACH SVHC substances</b>	Yes Lead
<b>SCIP number</b>	Ca7de37f-add8-4b77-9861-279c94903ade

#### Approvals / Standards

<b>Reference standard</b>	EN 60309-1 and -2
---------------------------	-------------------

#### General ordering information

<b>EAN13 code</b>	8015747074025
-------------------	---------------

#### Packaging Information

<b>Packaging length</b>	440,00 mm
<b>Packaging height</b>	180,00 mm
<b>Packaging width</b>	330,00 mm
<b>Packaging weight</b>	4,65 kg
<b>Packaging volume</b>	26,14 dm <sup>3</sup>
<b>Packaging description</b>	Carton box
<b>Packaging quantity</b>	10 Pcs
<b>Packaging EAN code</b>	8015747074032

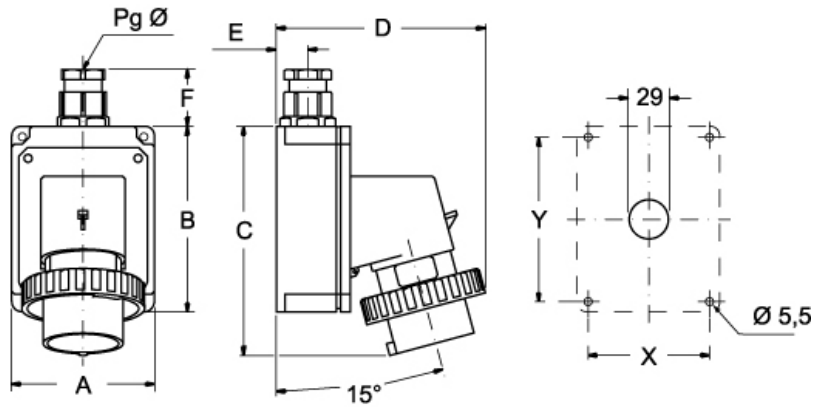
Part number

# PEW 1695 SM



Catalogue drawings

(16 / 32A) PEW ... SM



PEW ... SM		A	B	C	D	E	F	X	Y	Pg Ø
<b>16A</b>	2P+⊕	75	115	144	126	19	35	65	105	16
	3P+⊕	75	115	144	134	19	35	65	105	16
	3P+N+⊕	100	130	164	145	22	42	85	115	21
<b>32A</b>	2P+⊕	100	130	178	154	22	42	85	115	21
	3P+⊕	100	130	178	154	22	42	85	115	21
	3P+N+⊕	100	130	178	160	22	42	85	115	21