


Part number

PEW 1665 SM



Wall-mounting plug, PLUSO series, 3 poles + N + PE, 6 h (red), 16 A, 380 ÷ 415 V

Product description		Material properties	
Product type	Plug Wall-mounting	Colour	RAL 7035 grey, RAL 3000 red
Series	PEW...SM, PLUSO	RoHs conformity	Compliant with exemption 6(c): copper alloy containing up to 4% lead by weight
Connection type	Screw terminal connection	China RoHs - EFUP	50
N. of poles	3 poles + N + 	REACH SVHC substances	Yes Lead
Clock position	6	SCIP number	Ca7de37f-add8-4b77-9861-279c94903ade
Technical data		Approvals / Standards	
Current	16 A	Reference standard	EN 60309-1 and -2
Voltage	380 ÷ 415 V	General ordering information	
IP degree of protection	IP67	EAN13 code	8015747073097
Further technical details		Packaging Information	
Weight	408,00 g	Packaging weight	4,60 kg
Operating temperature range (min, max)	-25°C ... +40°C	Packaging volume	36,36 dm ³
		Packaging description	Carton box
		Packaging quantity	10 Pcs
		Packaging EAN code	8015747073103

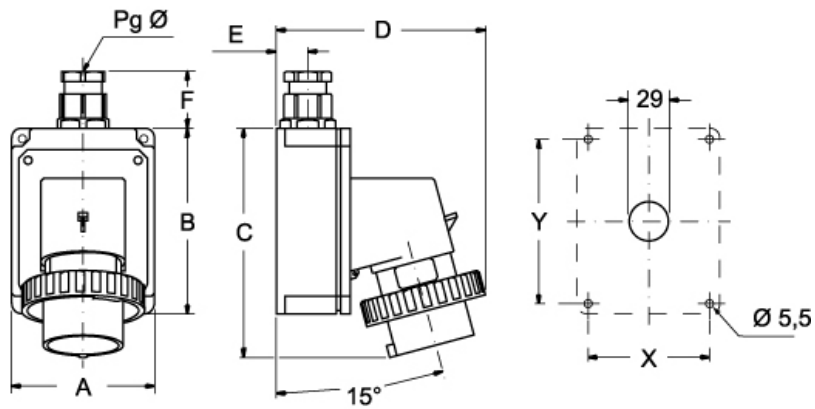
Part number

PEW 1665 SM



Catalogue drawings

(16 / 32A) PEW ... SM



PEW ... SM		A	B	C	D	E	F	X	Y	Pg Ø
16A	2P+⊕	75	115	144	126	19	35	65	105	16
	3P+⊕	75	115	144	134	19	35	65	105	16
	3P+N+⊕	100	130	164	145	22	42	85	115	21
32A	2P+⊕	100	130	178	154	22	42	85	115	21
	3P+⊕	100	130	178	154	22	42	85	115	21
	3P+N+⊕	100	130	178	160	22	42	85	115	21