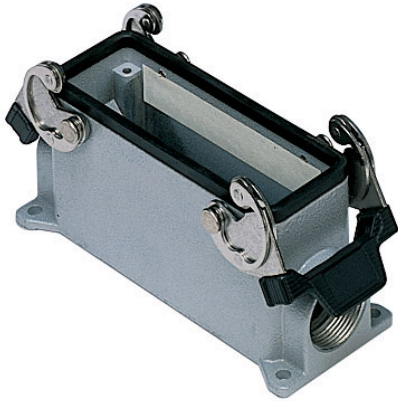


Part number

# MMAP 16.32



Surface mounting housing, 830V series, with 2 levers, M32 cable entry, size "104.27", high construction



Product description		Material properties	
<b>Product type</b>	Surface mounting housing	<b>Colour</b>	RAL 7040 grey
<b>Series</b>	830V	<b>RoHs conformity</b>	Compliant
<b>Closing type</b>	With 2 levers	<b>China RoHs - EFUP</b>	E
<b>Size</b>	Size 104.27	<b>REACH SVHC substances</b>	No
<b>Cable entry</b>	With cable entry M32	Approvals / Standards	
<b>Specification</b>	High construction	<b>Certifications</b>	DNV, BV
Technical data		<b>UL</b>	ECBT2
<b>IP degree of protection</b>	IP65 / IP66 / IP69	<b>cUL</b>	ECBT8
Further technical details		General ordering information	
<b>Weight</b>	500,00 g	<b>EAN13 code</b>	8015747057813
<b>Operating temperature range (min, max)</b>	-40°C...+125°C	Packaging Information	
		<b>Sub-packaging weight</b>	2,50 kg
		<b>Sub-packaging description</b>	Plastic packaging
		<b>Sub-packaging quantity</b>	5 Pcs
		<b>Sub-packaging EAN barcode</b>	8015747106603

Part number

# MMAP 16.32

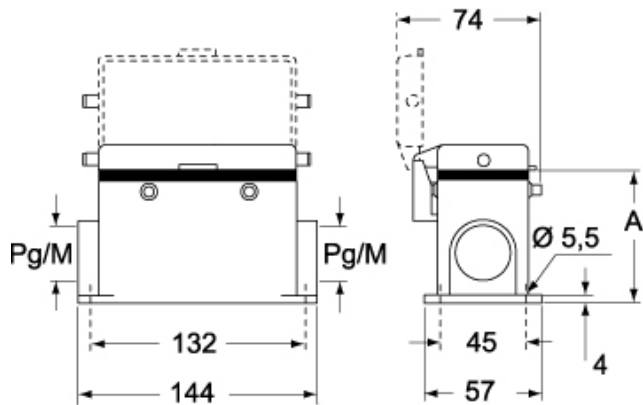


Catalogue drawings

## CMP CMAP - MMP MMAP



## CMP CS/CP CMAP CS/CP - MMP CS/CP MMAP CS/CP



	<b>A</b>
<b>CMP / MMP</b>	63
<b>CMAP / MMAP</b>	80
<b>CMP CS / MMP CS</b>	63
<b>CMAP CS / MMAP CS</b>	80
<b>CMP CP / MMP CP</b>	63
<b>CMAP CP / MMAP CP</b>	80