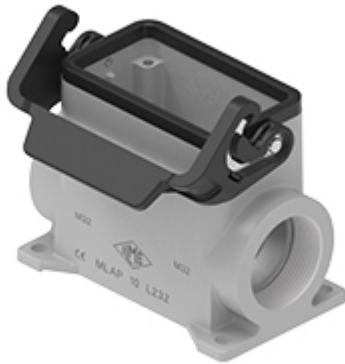


Part number

MLAP 10 L32



Surface mounting housing, IL-BRID series, with 1 lever, M32 cable entry, size "57.27", high construction

Product description		Material properties	
Product type	Surface mounting housing	Other materials	Lever: Polyamide (PA) and Stainless steel core Gasket: Rubber
Series	IL-BRID	Colour	RAL 7040 grey
Closing type	With 1 lever	RoHS conformity	Compliant
Size	Size 57.27	China RoHS - EFUP	E
Cable entry	With cable entry M32	REACH SVHC substances	No
Specification	High construction	General ordering information	
Technical data		EAN13 code	8015747287517
IP degree of protection	IP65 / IP66 / IP69	eCl@ss 8.1	27440202
Further technical details		ETIM 7.0	EC000437
Weight	284,50 g	Packaging Information	
Operating temperature range (min, max)	-40°C...+125°C	Packaging length	300,00 mm
		Packaging height	130,00 mm
		Packaging width	200,00 mm
		Packaging weight	3,07 kg
		Packaging volume	7,80 dm ³
		Packaging description	Carton box
		Packaging quantity	10 Pcs
		Packaging EAN code	8015747194778
		Sub-packaging weight	1,54 kg
		Sub-packaging description	Plastic packaging
		Sub-packaging quantity	5 Pcs
		Sub-packaging EAN barcode	8015747194785

Part number

MLAP 10 L32



Catalogue drawings

