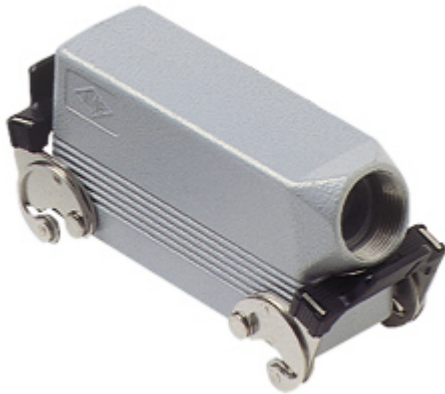


Part number

# MAO 24 X40



Hood, C-TYPE series, with 2 levers, M40 side cable entry, size "104.27", high construction, without gasket

Product description		Material properties	
<b>Product type</b>	Hood	<b>Other materials</b>	Lever: Stainless steel, polyamide (PA)
<b>Series</b>	C-TYPE	<b>Colour</b>	RAL 7040 grey
<b>Closing type</b>	With 2 levers	<b>RoHs conformity</b>	Compliant
<b>Size</b>	Size 104.27	<b>China RoHs - EFUP</b>	E
<b>Cable entry</b>	Side cable entry M40	<b>REACH SVHC substances</b>	No
<b>Specification</b>	High construction, without gasket	Approvals / Standards	
Technical data		<b>Certifications</b>	DNV, BV
<b>IP degree of protection</b>	IP65 / IP66 / IP69	<b>UL</b>	ECBT2
Further technical details		<b>cUL</b>	ECBT8
<b>Weight</b>	310,00 g	General ordering information	
<b>Operating temperature range (min, max)</b>	-40°C...+125°C	<b>EAN13 code</b>	8015747050654
		<b>eCl@ss 8.1</b>	27440202
		<b>ETIM 7.0</b>	EC000437
		Packaging Information	
		<b>Packaging length</b>	285,00 mm
		<b>Packaging height</b>	170,00 mm
		<b>Packaging width</b>	190,00 mm
		<b>Packaging weight</b>	3,40 kg
		<b>Packaging volume</b>	9,21 dm <sup>3</sup>
		<b>Packaging description</b>	Carton box
		<b>Packaging quantity</b>	10 Pcs
		<b>Packaging EAN code</b>	8015747215145
		<b>Sub-packaging weight</b>	1,70 kg
		<b>Sub-packaging description</b>	Plastic packaging
		<b>Sub-packaging quantity</b>	5 Pcs
		<b>Sub-packaging EAN barcode</b>	8015747050661

Part number

# MAO 24 X40



Catalogue drawings

**CHO X (CAO X) - MHO X (MAO X)**



**CHV X (CAV X) - MHV X (MAV X)**

