

Part number

# M7APE 06L240



Surface mounting housing, E-Xtreme® V-TYPE series, with 1 lever, M40 x 2 cable entry, size "44.27", high construction

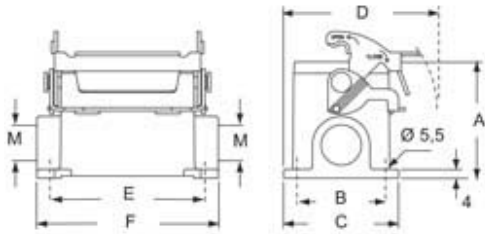
Product description		Material properties	
<b>Product type</b>	Surface mounting housing	<b>Other materials</b>	Lever: Stainless steel Gasket: FKM
<b>Series</b>	E-Xtreme® V-TYPE	<b>Colour</b>	RAL 7016 grey
<b>Closing type</b>	With 1 lever	<b>RoHs conformity</b>	Compliant
<b>Size</b>	Size 44.27	<b>China RoHs - EFUP</b>	E
<b>Cable entry</b>	With cable entry M40 x 2	<b>REACH SVHC substances</b>	No
<b>Specification</b>	High construction	<b>Approvals / Standards</b>	
<b>Technical data</b>		<b>Certifications</b>	DNV, BV
<b>IP degree of protection</b>	IP66 / IP67 / IP69	<b>UL</b>	ECBT2
<b>Further technical details</b>		<b>cUL</b>	ECBT8
<b>Operating temperature range (min, max)</b>	-40°C...+125°C	<b>General ordering information</b>	
		<b>EAN13 code</b>	8015747254106
		<b>eCl@ss 8.1</b>	27440202
		<b>ETIM 7.0</b>	EC000437

Part number

# M7APE 06L240



## Catalogue drawings



type	A	B	C	D	E	F
M7PE 06 L	53	40	52	70	70	82
M7APE 06 L	73	45	57	72,5	70	82

---