

Part number

# M7AP 06LS232



Surface mounting housing, V-TYPE series, with 1 lever, M32 x 2 cable entry, size "44.27", high construction, with metal cover

Product description	
<b>Product type</b>	Surface mounting housing
<b>Series</b>	V-TYPE
<b>Closing type</b>	With 1 lever
<b>Size</b>	Size 44.27
<b>Cable entry</b>	With cable entry M32 x 2
<b>Specification</b>	High construction, with metal cover
Technical data	
<b>IP degree of protection</b>	IP66 / IP67 / IP69
Further technical details	
<b>Operating temperature range (min, max)</b>	-40°C...+125°C

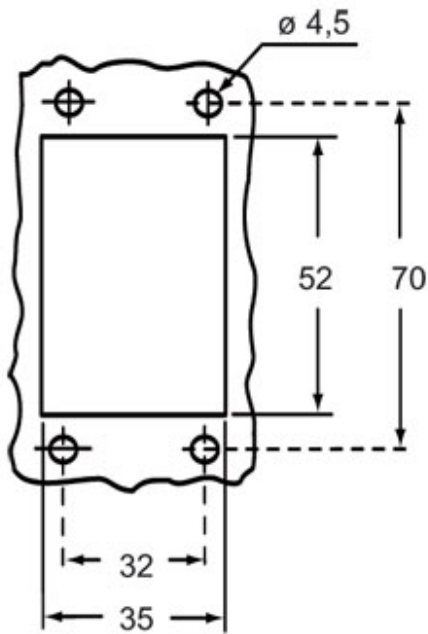
Material properties	
<b>Other materials</b>	Lever: Stainless steel Gasket: NBR
<b>Colour</b>	RAL 7040 grey
<b>RoHs conformity</b>	Compliant
<b>China RoHs - EFUP</b>	E
<b>REACH SVHC substances</b>	No
Approvals / Standards	
<b>Certifications</b>	DNV, BV
<b>UL</b>	ECBT2
<b>cUL</b>	ECBT8
General ordering information	
<b>EAN13 code</b>	8015747240093
<b>eCl@ss 8.1</b>	27440202
<b>ETIM 7.0</b>	EC000437

Part number

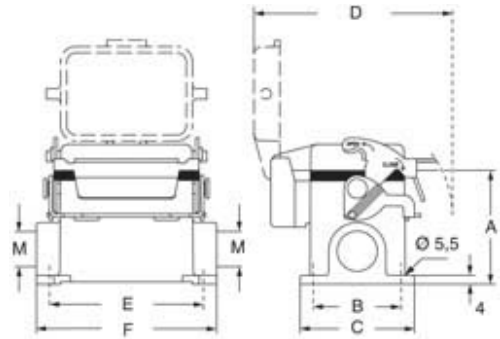
# M7AP 06LS232



Catalogue drawings



Catalogue drawings



type	A	B	C	D	E	F
M7P 06 LS	53	40	52	91	70	82
M7AP 06 LS	73	45	57	91	70	82