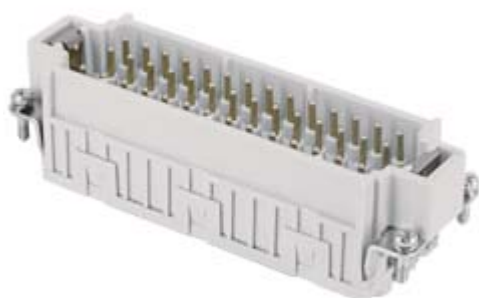



Part number

JDSM 42 N



Male insert, JDS series, spring terminal connection, 42 poles + PE (43-84), 10 A 400 V 6 kV 3, size "104.62"

Product description

| | |
|------------------------|--|
| Product type | Insert |
| Series | JDS |
| Connection type | Spring terminal connection |
| Gender | Male |
| N. of poles | 84 poles +  |
| Size | Size 104.62 |

Technical data

| | |
|--|--|
| Current | 10 A |
| Voltage | 400 V |
| Rated impulse withstand voltage | 6 kV |
| Pollution degree | 3 |
| Rated voltage according to UL/CSA | 600V |
| Wire cross-section | 0,14 mm ² - 2,50 mm ² |
| AWG size | 26 - 14 |
| Contact type | Turned tin plated |
| Pole numbering system | 43-84 |
| IP degree of protection | IP20 without enclosure, IP65/IP66 with enclosure |

Further technical details

| | |
|---|------------------------------------|
| Characteristics according to EN 61984 | 10A 400V 6kV 3; 10A 400/690V 6kV 2 |
| Mating cycles | ≥ 200 |
| Insulation resistance | ≥ 10 GΩ |
| Weight | 115,70 g |
| Operating temperature range (min, max) | -40 °C ... +125 °C |
| UL 94 flammability rating | V-0 |

Material properties

| | |
|------------------------------|--|
| Main material | Polycarbonate (PC) |
| Other materials | Contacts: copper alloy |
| Colour | RAL 7035 grey |
| RoHs conformity | Compliant with exemption 6(c): copper alloy containing up to 4% lead by weight |
| China RoHs - EFUP | 50 |
| REACH SVHC substances | Yes Lead |
| SCIP number | 1a9c93ff-0445-4a16-81e3-1609ac5274d6 |

Approvals / Standards

| | |
|---------------------------|------------------------|
| Reference standard | EN 61984:2009-06 |
| Certifications | CSA, CQC, DNV, BV, EAC |
| UL | ECBT2 |
| cUL | ECBT8 |

General ordering information

| | |
|-------------------|---------------|
| EAN13 code | 8015747202121 |
|-------------------|---------------|

Packaging Information

| | |
|----------------------------------|----------------------|
| Packaging length | 270,00 mm |
| Packaging height | 75,00 mm |
| Packaging width | 180,00 mm |
| Packaging weight | 3,83 kg |
| Packaging volume | 3,65 dm ³ |
| Packaging description | Carton box |
| Packaging quantity | 30 Pcs |
| Packaging EAN code | 8015747202138 |
| Sub-packaging length | 113,00 mm |
| Sub-packaging height | 36,00 mm |
| Sub-packaging width | 180,00 mm |
| Sub-packaging weight | 0,64 kg |
| Sub-packaging volume | 0,73 dm ³ |
| Sub-packaging description | Carton tray |
| Sub-packaging quantity | 5 Pcs |
| Sub-packaging EAN barcode | 8015747202145 |