

Part number

# FM 1043 CO



Collar for 1043 format box system, FM series

| Product description                           |                                   |
|---|-----------------------------------|
| <b>Product type</b>                           | Collar for 1043 format box system |
| <b>Series</b>                                 | FM                                |
| Further technical details                     |                                   |
| <b>Weight</b>                                 | 1,00 g                            |
| <b>Operating temperature range (min, max)</b> | -40°C ... +125°C                  |

| Material properties              |               |
|----------------------------------|---------------|
| <b>Colour</b>                    | RAL 7035 grey |
| General ordering information     |               |
| <b>EAN13 code</b>                | 8015747047043 |
| Packaging Information            |               |
| <b>Packaging description</b>     | Carton box    |
| <b>Packaging quantity</b>        | 10 Pcs        |
| <b>Packaging EAN code</b>        | 8015747047050 |
| <b>Sub-packaging description</b> | Plastic bag   |
| <b>Sub-packaging quantity</b>    | 1 Pcs         |
| <b>Sub-packaging EAN barcode</b> | 8015747047067 |



Catalogue drawings

FM complementary parts and accessories



Box system carrying handle  
Climbing irons for box fixing



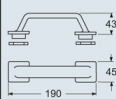
DIN-rail EN 60715 - Insulated terminal block  
Collar - Screws kit - Adhesive label



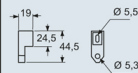
| Description   | Part No.        | Part No.  |
|---|-----------------|---|
| <b>Box system carrying handle</b><br>- For 3236, 2451, 3251, 3221 and 4272 boards   | <b>FM 32 MT</b> |   |
| <b>Climbing irons for external wall mounting</b><br>- For 3236, 2451, 3251, 3221 and 4272 boards  | <b>BC SFT</b>   |   |
| <b>Sized DIN-rail EN 60715 (35 mm)</b><br>With back plates for the positioning at different depths and fixing screws<br>- For 2451 boards<br>- For 3236, 3251, 3221 boards<br>- For 4272 boards |                 | <b>FM GD 18</b><br><b>FM GD 25</b><br><b>FM GD 35</b> |
| <b>Insulated terminal block, 3 P 25 mm<sup>2</sup> + 10 P 10 mm<sup>2</sup></b><br>- For neutral and/or ground, compliant with EN 60998-2-1, stackable (up to 2 units)                          |                 | <b>FM 2510 MI</b>                                     |
| <b>collar</b><br>- for format 1043 box system   |                 | <b>FM 1043 CO</b>                                     |
| <b>screws kit</b><br>- for mounting sockets PQ-PI-PQF-PIF series  |                 | <b>FM 416</b>   |
| <b>adhesive label</b><br>- for the identification of the mounted modular devices  |                 | <b>FM 18 ET</b>                                       |

Dimensions in mm

**FM 32 MT**

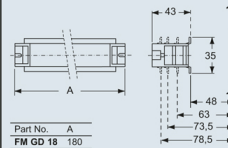


**BC SFT**

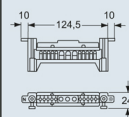


Dimensions in mm

**FM GDxx**



**FM 2510 MI**



Dimensions indicated are not binding and may be changed without prior notice.