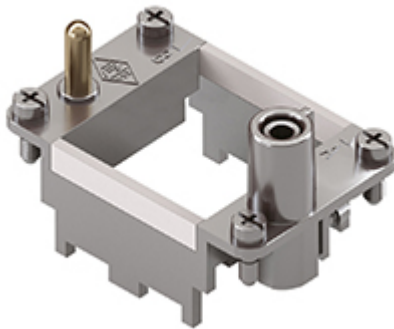


Part number

# CX 02 TM



Frame for Mixo inserts, 2 modules, for 2 modular inserts and enclosures size "44.27", frame for hoods

#### Product description

<b>Product type</b>	Frame for Mixo inserts
<b>Size</b>	2 modules
<b>Specification</b>	For 2 modular inserts and enclosures size 44.27 Frame for hoods

#### Further technical details

<b>Weight</b>	45,00 g
<b>UL 94 flammability rating</b>	V-0

#### Material properties

<b>RoHs conformity</b>	Compliant with exemption 6(c): copper alloy containing up to 4% lead by weight
<b>China RoHs - EFUP</b>	50
<b>REACH SVHC substances</b>	Yes Lead
<b>SCIP number</b>	C0556c52-3b1b-4ffb-87d5-58c9db853c44

#### Approvals / Standards

<b>UL</b>	ECBT2
<b>cUL</b>	ECBT8

#### General ordering information

<b>EAN13 code</b>	8015747041676
<b>eCl@ss 8.1</b>	27440210
<b>ETIM 7.0</b>	EC002310

#### Packaging Information

<b>Packaging length</b>	270,00 mm
<b>Packaging height</b>	75,00 mm
<b>Packaging width</b>	180,00 mm
<b>Packaging weight</b>	2,80 kg
<b>Packaging volume</b>	3,65 dm <sup>3</sup>
<b>Packaging description</b>	Carton box
<b>Packaging quantity</b>	60 Pcs
<b>Packaging EAN code</b>	8015747264198
<b>Sub-packaging length</b>	104,00 mm
<b>Sub-packaging height</b>	36,00 mm
<b>Sub-packaging width</b>	180,00 mm
<b>Sub-packaging weight</b>	0,47 kg
<b>Sub-packaging volume</b>	0,67 dm <sup>3</sup>
<b>Sub-packaging description</b>	Carton tray
<b>Sub-packaging quantity</b>	10 Pcs
<b>Sub-packaging EAN barcode</b>	8015747264204

Part number

# CX 02 TM



Catalogue drawings

