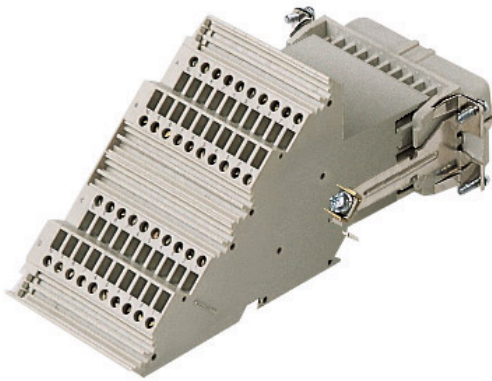


Part number

CTF 40 R



Female insert, CT series, screw terminal connection, 40 poles + PE, 10 A 250 V 4 kV 3, size "77.27", with incorporated terminal block, right side mounting

Product description

| | |
|------------------------|---|
| Product type | Insert |
| Series | CT |
| Connection type | Screw terminal connection |
| Gender | Female |
| N. of poles | 40 poles + |
| Size | Size 77.27 |
| Specification | Right side mounting With incorporated terminal block |

Technical data

| | |
|--|--|
| Current | 10 A |
| Voltage | 250 V |
| Rated impulse withstand voltage | 4 kV |
| Pollution degree | 3 |
| Rated voltage according to UL/CSA | 600 V |
| Wire cross-section | 0,75 mm ² - 2,50 mm ² |
| AWG size | 18 - 14 |
| Contact type | Turned silver plated |
| IP degree of protection | IP20 without enclosure, IP66/IP69 with enclosure |

Further technical details

| | |
|---|--|
| Characteristics according to EN 61984 | 10A 250V 4kV 3; 10A 230/400V 4kV 2 |
| Mating cycles | ≥ 500 |
| Insulation resistance | ≥ 10 GΩ |
| Contact resistance | ≤ 4 mΩ |
| Weight | 370,00 g |
| Operating temperature range (min, max) | -40 °C ... +125 °C |
| Conductors stripping length | 12 mm |
| UL 94 flammability rating | V-0 |
| Torque for main contact | M2,6: 0,4 Nm; 3,5 lb.in (0,5 x 3 mm) |
| Tightening torque for PE connection | M4: 1,2 Nm, 10,6 lb.in (Ph2 or 1,0x5,5mm) |
| Tightening torque for fixing screws | M3: 0,5 Nm; 4,4 lb.in (Ph1 or 0.8x4 mm) |

Material properties

| | |
|------------------------------|--|
| Main material | Polycarbonate (PC) |
| Other materials | Contacts: copper alloy |
| Colour | RAL 7032 grey |
| RoHs conformity | Compliant with exemption 6(c): copper alloy containing up to 4% lead by weight |
| China RoHs - EFUP | 50 |
| REACH SVHC substances | Yes Lead |
| SCIP number | 1a9c93ff-0445-4a16-81e3-1609ac5274d6 |

Approvals / Standards

| | |
|---------------------------|------------------------|
| Reference standard | EN 61984:2009-06 |
| Certifications | CSA, CQC, DNV, BV, EAC |
| UL | ECBT2 |

General ordering information

| | |
|-------------------|---------------|
| EAN13 code | 8015747040983 |
| eCl@ss 8.1 | 27440205 |
| ETIM 7.0 | EC000438 |

Packaging Information

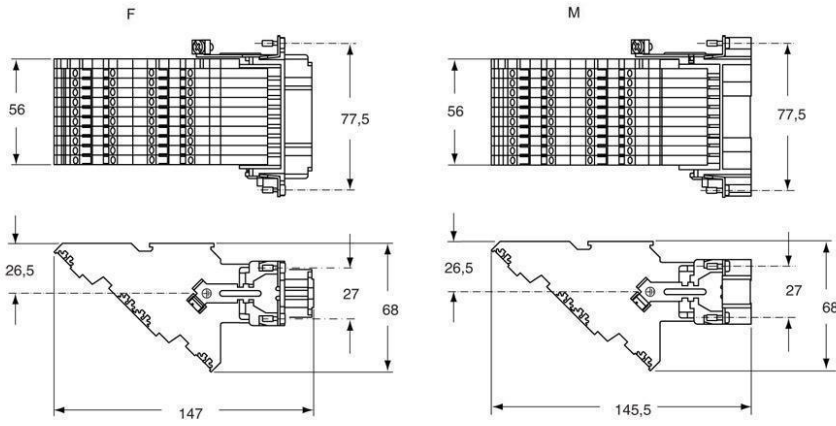
| | |
|----------------------------------|----------------------|
| Sub-packaging length | 145,00 mm |
| Sub-packaging height | 89,00 mm |
| Sub-packaging width | 90,00 mm |
| Sub-packaging weight | 0,37 kg |
| Sub-packaging volume | 1,16 dm ³ |
| Sub-packaging description | Carton box |
| Sub-packaging quantity | 1 Pcs |
| Sub-packaging EAN barcode | 8015747040990 |

Part number

CTF 40 R



Catalogue drawings



Catalogue drawings

