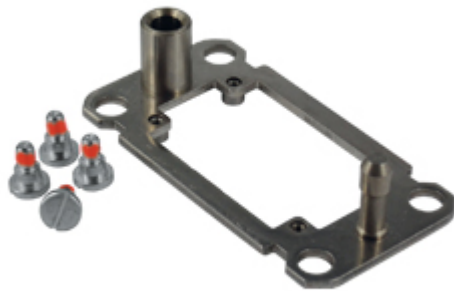


Part number

CR 10 DF



Docking frame, size "57.27", for inserts size "57.27" and frames for 3 inserts

Product description

Product type	Docking frame
Size	Size 57.27
Specification	For inserts size "57.27" and frames for 3 inserts

Further technical details

Weight	103,00 g
---------------	----------

General ordering information

EAN13 code	8015747182355
eCl@ss 8.1	27440210
ETIM 7.0	EC002310

Packaging Information

Packaging length	220,00 mm
Packaging height	130,00 mm
Packaging width	240,00 mm
Packaging weight	2,23 kg
Packaging volume	6,86 dm ³
Packaging description	Carton box
Packaging quantity	20 Pcs
Packaging EAN code	8015747043267
Sub-packaging weight	0,11 kg
Sub-packaging description	Plastic bag
Sub-packaging quantity	1 Pcs
Sub-packaging EAN barcode	8015747182386

Part number

CR 10 DF



Catalogue drawings

