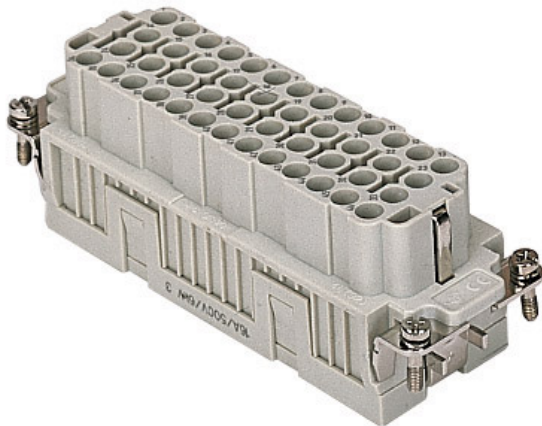


Part number

CQEF 46



Female insert, CQE series, crimp connection, 46 poles + PE, 16 A 500 V 6 kV 3, size "104.27"

Product description

| | |
|------------------------|------------------|
| Product type | Insert |
| Series | CQE |
| Connection type | Crimp connection |
| Gender | Female |
| N. of poles | 46 poles + |
| Size | Size 104.27 |

Technical data

| | |
|--|--|
| Current | 16 A |
| Voltage | 500 V |
| Rated impulse withstand voltage | 6 kV |
| Pollution degree | 3 |
| Rated voltage according to UL/CSA | 600 V |
| IP degree of protection | IP20 without enclosure, IP65/IP66/IP68/IP69 with enclosure |

Further technical details

| | |
|---|--------------------------------|
| Characteristics according to EN 61984 | 16A 500V 6kV 3; 16A 830V 8kV 2 |
| Mating cycles | ≥ 500 |
| Insulation resistance | ≥ 10 GΩ |
| Contact resistance | ≤ 1 mΩ |
| Weight | 85,00 g |
| Operating temperature range (min, max) | -40 °C ... +125 °C |
| UL 94 flammability rating | V-0 |

Material properties

| | |
|------------------------------|--------------------|
| Main material | Polycarbonate (PC) |
| Colour | RAL 7032 grey |
| RoHs conformity | Compliant |
| China RoHs - EFUP | E |
| REACH SVHC substances | No |

Approvals / Standards

| | |
|---------------------------|------------------------|
| Reference standard | EN 61984:2009-06 |
| Certifications | CSA, CQC, DNV, BV, EAC |
| UL | ECBT2 |
| cUL | ECBT8 |

General ordering information

| | |
|-------------------|---------------|
| EAN13 code | 8015747037129 |
| eCl@ss 8.1 | 27440205 |
| ETIM 7.0 | EC000438 |

Packaging Information

| | |
|----------------------------------|----------------------|
| Packaging length | 270,00 mm |
| Packaging height | 75,00 mm |
| Packaging width | 180,00 mm |
| Packaging weight | 2,92 kg |
| Packaging volume | 3,65 dm ³ |
| Packaging description | Carton box |
| Packaging quantity | 30 Pcs |
| Packaging EAN code | 8015747208833 |
| Sub-packaging length | 113,00 mm |
| Sub-packaging height | 36,00 mm |
| Sub-packaging width | 180,00 mm |
| Sub-packaging weight | 0,49 kg |
| Sub-packaging volume | 0,73 dm ³ |
| Sub-packaging description | Carton tray |
| Sub-packaging quantity | 5 Pcs |
| Sub-packaging EAN barcode | 8015747037136 |

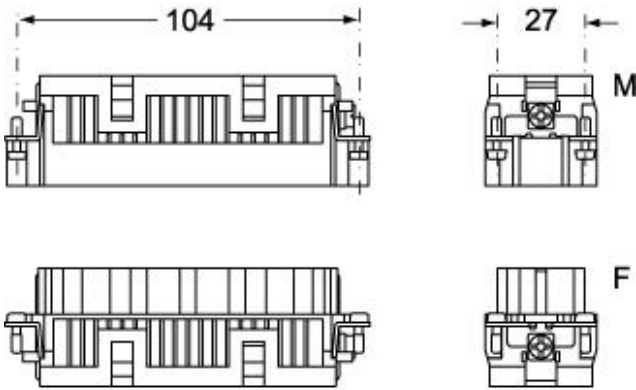
Part number

CQEF 46

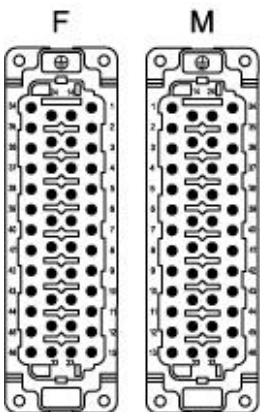


Catalogue drawings

CQEM 46



CQEF 46



Catalogue drawings

diagram CQE 46 and 92 poles

