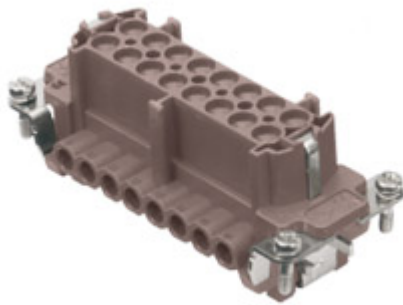


Part number

# CNEFD 16 RY



Female insert, CNE RY series, screw terminal connection, 16 poles + PE, 16 A 500 V 6 kV 3, size "77.27", for applications up to 180°C, with plate

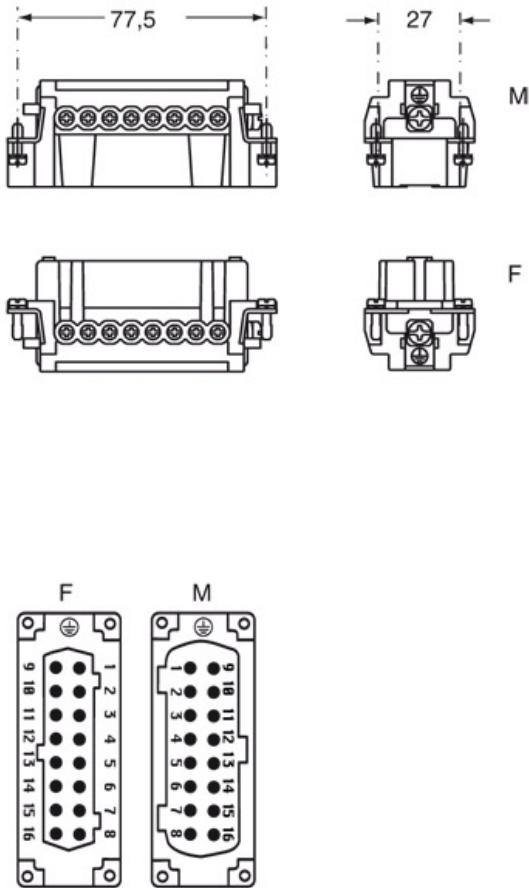
| Product description                           |   | Material properties                 |  |
|---|---|-------------------------------------|--|
| <b>Product type</b>                           | Insert                                      | <b>Main material</b>                | Polyphenylene sulfide (PPS)  |
| <b>Series</b>                                 | CNE RY                                      | <b>Other materials</b>              | Contacts: copper alloy   |
| <b>Connection type</b>                        | Screw terminal connection                   |                                     | Compliant with exemption 6(c): copper alloy containing up to 4% lead by weight |
| <b>Gender</b>                                 | Female                                      | <b>RoHs conformity</b>              |  |
| <b>N. of poles</b>                            | 16 poles +                                  | <b>China RoHs - EFUP</b>            | 50   |
| <b>Size</b>                                   | Size 77.27                                  | <b>REACH SVHC substances</b>        | Yes<br>Lead  |
| <b>Specification</b>                          | With plate<br>For applications up to 180°C  | <b>SCIP number</b>                  | 1a9c93ff-0445-4a16-81e3-1609ac5274d6   |
| Technical data                                |   | Approvals / Standards               |  |
| <b>Current</b>                                | 16 A  | <b>Certifications</b>               | CSA, CQC, DNV, BV, EAC   |
| <b>Voltage</b>                                | 500 V                                       | <b>UL</b>                           | ECBT2  |
| <b>Rated impulse withstand voltage</b>        | 6 kV  | <b>cUL</b>                          | ECBT8  |
| <b>Pollution degree</b>                       | 3   | <b>General ordering information</b> |  |
| <b>Rated voltage according to UL/CSA</b>      | 600 V                                       | <b>EAN13 code</b>                   | 8015747113526  |
| <b>Wire cross-section</b>                     | 0,50 mm <sup>2</sup> - 4,00 mm <sup>2</sup> | <b>ETIM 7.0</b>                     | EC000438   |
| <b>AWG size</b>                               | 20 - 12                                     | <b>Packaging Information</b>        |  |
| <b>Contact type</b>                           | Turned gold plated                          | <b>Packaging length</b>             | 230,00 mm  |
| <b>IP degree of protection</b>                | IP20 without enclosure, IP65 with enclosure | <b>Packaging height</b>             | 110,00 mm  |
| <b>Further technical details</b>              |   | <b>Packaging width</b>              | 180,00 mm  |
| <b>Characteristics according to EN 61984</b>  | 16A 500V 6kV 3; 16A 400/690V 6kV 2          | <b>Packaging weight</b>             | 2,86 kg  |
| <b>Mating cycles</b>                          | ≥ 500                                       | <b>Packaging volume</b>             | 4,55 dm <sup>3</sup>   |
| <b>Insulation resistance</b>                  | ≥ 10 GΩ                                     | <b>Packaging description</b>        | Carton box   |
| <b>Contact resistance</b>                     | ≤ 1 mΩ                                      | <b>Packaging quantity</b>           | 30 Pcs   |
| <b>Weight</b>                                 | 85,00 g                                     | <b>Packaging EAN code</b>           | 8015747144827  |
| <b>Operating temperature range (min, max)</b> | -40°C ... +180°C                            | <b>Sub-packaging length</b>         | 87,00 mm   |
| <b>Conductors stripping length</b>            | 7 mm  | <b>Sub-packaging height</b>         | 36,00 mm   |
| <b>UL 94 flammability rating</b>              | V-0   | <b>Sub-packaging width</b>          | 180,00 mm  |
| <b>Torque for main contact</b>                | M3: 0.5 Nm; 4.4 lb.in (Ph0 or 0,8 x 4)      | <b>Sub-packaging weight</b>         | 0,48 kg  |
| <b>Tightening torque for PE connection</b>    | M3: 0,5 Nm; 4,4 lb.in (Ph0 or 0,8 x 4)      | <b>Sub-packaging volume</b>         | 0,56 dm <sup>3</sup>   |
| <b>Tightening torque for fixing screws</b>    | M3: 0.5 Nm; 4.4 lb.in (Ph0 or 0,8 x 4)      | <b>Sub-packaging description</b>    | Carton tray  |
|   |   | <b>Sub-packaging quantity</b>       | 5 Pcs  |
|   |   | <b>Sub-packaging EAN barcode</b>    | 8015747144841  |

Part number

# CNEFD 16 RY



Catalogue drawings



Derating curves

