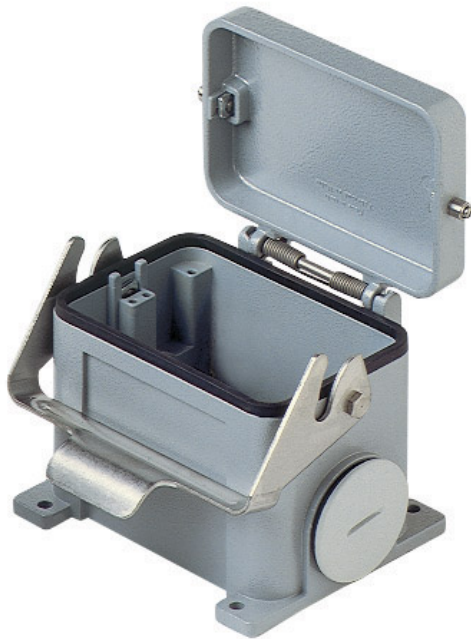


Part number

# CHP 48 LS29



Surface mounting housing, C-TYPE series, with 1 lever, Pg29 x 2 cable entry, size "104.62", with metal cover

Product description		Material properties	
<b>Product type</b>	Surface mounting housing	<b>Other materials</b>	Lever: Stainless steel, polyamide (PA) Gasket: NBR
<b>Series</b>	C-TYPE	<b>Colour</b>	RAL 7040 grey
<b>Closing type</b>	With 1 lever	<b>RoHS conformity</b>	Compliant
<b>Size</b>	Size 104.62	<b>China RoHS - EFUP</b>	E
<b>Cable entry</b>	With cable entry Pg29 x 2	<b>REACH SVHC substances</b>	No
<b>Specification</b>	With metal cover		
Technical data		Approvals / Standards	
<b>IP degree of protection</b>	IP65	<b>Certifications</b>	DNV, BV
		<b>UL</b>	ECBT2
		<b>cUL</b>	ECBT8
Further technical details		General ordering information	
<b>Weight</b>	1.261,00 g	<b>EAN13 code</b>	8015747023122
<b>Operating temperature range (min, max)</b>	-40°C...+125°C		
		Packaging Information	
		<b>Packaging length</b>	305,00 mm
		<b>Packaging height</b>	180,00 mm
		<b>Packaging width</b>	275,00 mm
		<b>Packaging weight</b>	5,32 kg
		<b>Packaging volume</b>	15,10 dm <sup>3</sup>
		<b>Packaging description</b>	Carton box
		<b>Packaging quantity</b>	4 Pcs
		<b>Packaging EAN code</b>	8015747023139
		<b>Sub-packaging weight</b>	1,33 kg
		<b>Sub-packaging description</b>	Carton box
		<b>Sub-packaging quantity</b>	1 Pcs
		<b>Sub-packaging EAN barcode</b>	8015747023146