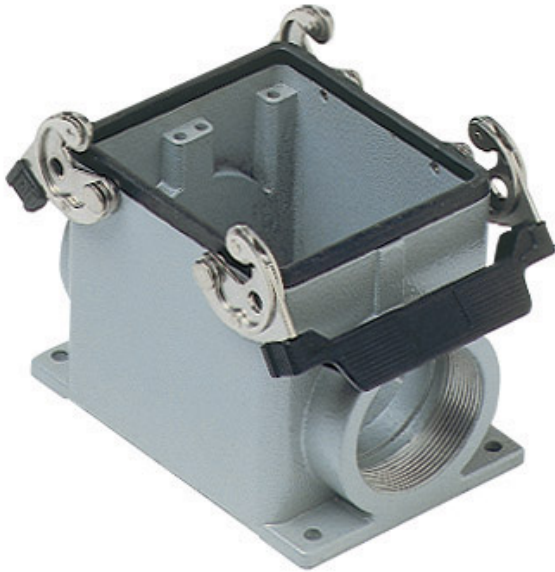


Part number

# CHP 32.2



Surface mounting housing, C-TYPE series, with 2 levers, Pg36 x 2 cable entry, size "77.62"

#### Product description

|                     |                              |
|---------------------|------------------------------|
| <b>Product type</b> | Surface mounting housing     |
| <b>Series</b>       | C-TYPE                       |
| <b>Closing type</b> | With 2 levers                |
| <b>Size</b>         | Size 77.62                   |
| <b>Cable entry</b>  | With cable entry<br>Pg36 x 2 |

#### Technical data

**IP degree of protection** IP65 / IP66 / IP69

#### Further technical details

|   |                |
|---|----------------|
| <b>Weight</b>                                 | 732,00 g       |
| <b>Operating temperature range (min, max)</b> | -40°C...+125°C |

#### Material properties

|                              |   |
|------------------------------|---|
| <b>Other materials</b>       | Lever: Stainless steel, polyamide (PA)<br>Gasket: NBR |
| <b>Colour</b>                | RAL 7040 grey   |
| <b>RoHs conformity</b>       | Compliant   |
| <b>China RoHs - EFUP</b>     | E   |
| <b>REACH SVHC substances</b> | No  |

#### Approvals / Standards

|                       |         |
|-----------------------|---------|
| <b>Certifications</b> | DNV, BV |
| <b>UL</b>             | ECBT2   |
| <b>cUL</b>            | ECBT8   |

#### General ordering information

**EAN13 code** 8015747022989

#### Packaging Information

|                                  |                       |
|----------------------------------|-----------------------|
| <b>Packaging length</b>          | 475,00 mm             |
| <b>Packaging height</b>          | 200,00 mm             |
| <b>Packaging width</b>           | 150,00 mm             |
| <b>Packaging weight</b>          | 3,44 kg               |
| <b>Packaging volume</b>          | 14,25 dm <sup>3</sup> |
| <b>Packaging description</b>     | Carton box            |
| <b>Packaging quantity</b>        | 4 Pcs                 |
| <b>Packaging EAN code</b>        | 8015747088749         |
| <b>Sub-packaging length</b>      | 116,00 mm             |
| <b>Sub-packaging height</b>      | 113,00 mm             |
| <b>Sub-packaging width</b>       | 142,00 mm             |
| <b>Sub-packaging weight</b>      | 0,86 kg               |
| <b>Sub-packaging volume</b>      | 1,86 dm <sup>3</sup>  |
| <b>Sub-packaging description</b> | Carton box            |
| <b>Sub-packaging quantity</b>    | 1 Pcs                 |
| <b>Sub-packaging EAN barcode</b> | 8015747129701         |

Part number

# CHP 32.2



Catalogue drawings

**CHP - MHP**

