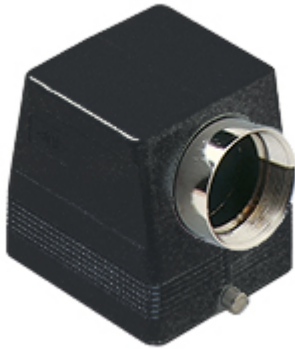


Part number

CHOW 32 L



Hood, W-TYPE series, with 2 pegs, Pg36 side cable entry, size "77.62"

Product description

Product type	Hood
Series	W-TYPE
Closing type	With 2 pegs
Size	Size 77.62
Cable entry	Side cable entry with adapter Pg36

Technical data

IP degree of protection IP65 / IP66 / IP69

Further technical details

Weight	417,70 g
Operating temperature range (min, max)	-40°C...+125°C

Material properties

Other materials	Gasket: FKM
Colour	RAL 9005 black
RoHs conformity	Compliant with exemption 6(c): copper alloy containing up to 4% lead by weight
China RoHs - EFUP	50
REACH SVHC substances	Yes Lead
SCIP number	15deaf78-e939-4401-a0b0-e2228ca32a03

Approvals / Standards

Certifications	DNV, BV
UL	ECBT2
cUL	ECBT8

General ordering information

EAN13 code 8015747021319

Packaging Information

Packaging length	370,00 mm
Packaging height	140,00 mm
Packaging width	210,00 mm
Packaging weight	3,49 kg
Packaging volume	10,88 dm ³
Packaging description	Carton box
Packaging quantity	8 Pcs
Packaging EAN code	8015747021326
Sub-packaging weight	0,44 kg
Sub-packaging description	Plastic packaging
Sub-packaging quantity	1 Pcs
Sub-packaging EAN barcode	8015747021333