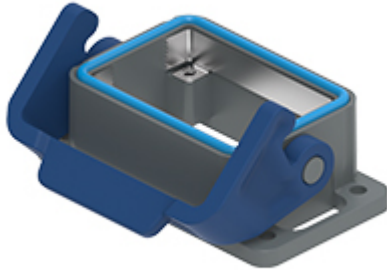


Part number

THIC 06 LB



Bulkhead mounting housing, T-TYPE/C series, with 1 lever, size "44.27", with integrated protective PE jumpers

Product description	
Product type	Bulkhead mounting housing
Series	T-TYPE/C
Closing type	With 1 lever
Size	Size 44.27
Cable entry	Without cable entry
Specification	With integrated protective PE jumpers
Technical data	
IP degree of protection	IP66 / IP69
Further technical details	
Weight	58,00 g
Operating temperature range (min, max)	-50°C ... +70°C

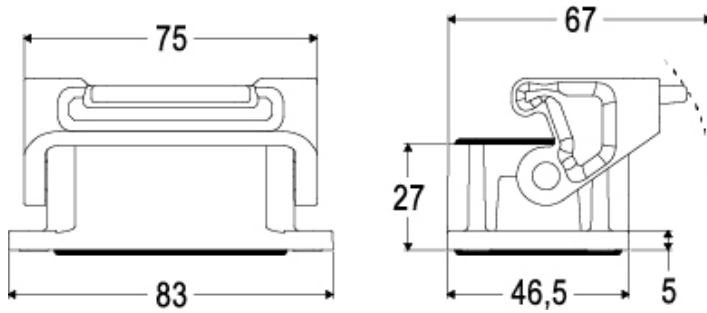
Material properties	
Main material	Polypropylene (PP)
Other materials	Lever: Polypropylene (PP) Gasket: Silicone rubber PE jumpers: galvanized brass
Colour	RAL 7012 grey, RAL 5005 blue
RoHs conformity	Compliant
China RoHs - EFUP	E
REACH SVHC substances	No
General ordering information	
EAN13 code	8015747278188
Packaging Information	
Packaging length	260,00 mm
Packaging height	190,00 mm
Packaging width	220,00 mm
Packaging weight	2,95 kg
Packaging volume	10,87 dm ³
Packaging description	Carton box
Packaging quantity	40 Pcs
Packaging EAN code	8015747016698
Sub-packaging weight	0,37 kg
Sub-packaging description	Plastic packaging
Sub-packaging quantity	5 Pcs
Sub-packaging EAN barcode	8015747291347

Part number

THIC 06 LB



Catalogue drawings



Catalogue drawings

