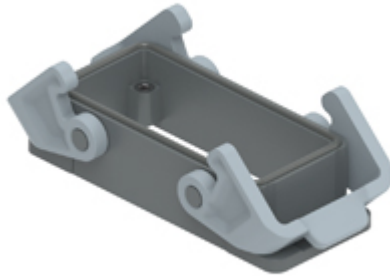


Part number

TCHI 16 B



Bulkhead mounting housing, T-TYPE series, with 2 levers, size "77.27", with integrated protective PE jumpers

Product description

Product type	Bulkhead mounting housing
Series	T-TYPE
Closing type	With 2 levers
Size	Size 77.27
Cable entry	Without cable entry
Specification	With integrated protective PE jumpers

Technical data

IP degree of protection	IP65
--------------------------------	------

Further technical details

Weight	0,20 g
Operating temperature range (min, max)	-40°C ... +90°C

Material properties

Main material	Polypropylene (PP)
Other materials	Lever: Polyamide (PA) Gasket: polyurethane (PUR) PE jumpers: galvanized brass
Colour	RAL 7012 grey, RAL 7001 grey
RoHs conformity	Compliant
China RoHs - EFUP	E
REACH SVHC substances	No

Approvals / Standards

UL	ECBT2
cUL	ECBT8

General ordering information

EAN13 code	8015747277204
eCl@ss 8.1	27440202
ETIM 7.0	EC000437

Packaging Information

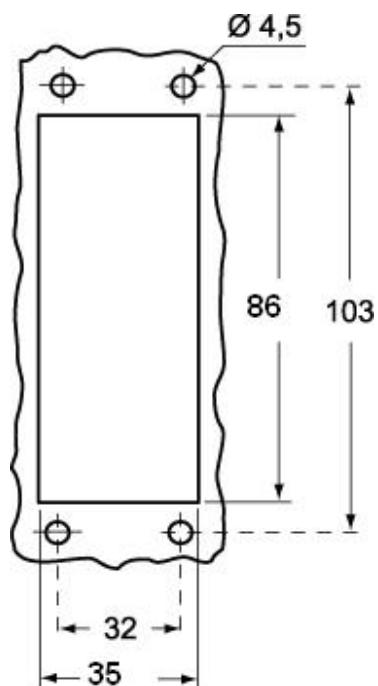
Packaging length	360,00 mm
Packaging height	165,00 mm
Packaging width	315,00 mm
Packaging volume	18,71 dm ³
Packaging description	Carton box
Packaging quantity	40 Pcs
Packaging EAN code	8015747301084
Sub-packaging description	Plastic packaging
Sub-packaging quantity	5 Pcs
Sub-packaging EAN barcode	8015747301091

Part number

TCHI 16 B



Catalogue drawings



Catalogue drawings

