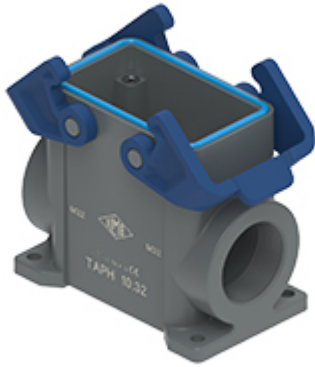


Part number

TAPH 10.32



Surface mounting housing, T-TYPE /H series,
with 2 levers, M32 cable entry, size "57.27"

| Product description | | Material properties | |
|---|--------------------------|----------------------------------|---|
| Product type | Surface mounting housing | Main material | Polypropylene (PP) |
| Series | T-TYPE /H | Other materials | Lever: Polypropylene (PP), metal-detectable Gasket: HNBR |
| Closing type | With 2 levers | Colour | RAL 7012 grey, RAL 5005 blue |
| Size | Size 57.27 | RoHS conformity | Compliant |
| Cable entry | With cable entry M32 | China RoHS - EFUP | E |
| Technical data | | REACH SVHC substances | No |
| IP degree of protection | IP66 / IP69 | General ordering information | |
| Further technical details | | EAN13 code | 8015747209939 |
| Weight | 160,00 g | eCl@ss 8.1 | 27440202 |
| Operating temperature range (min, max) | -40°C ... +70°C | ETIM 7.0 | EC000437 |
| | | Packaging Information | |
| | | Packaging length | 310,00 mm |
| | | Packaging height | 220,00 mm |
| | | Packaging width | 240,00 mm |
| | | Packaging weight | 3,50 kg |
| | | Packaging volume | 16,37 dm ³ |
| | | Packaging description | Carton box |
| | | Packaging quantity | 20 Pcs |
| | | Packaging EAN code | 8015747210072 |
| | | Sub-packaging weight | 0,88 kg |
| | | Sub-packaging description | Plastic packaging |
| | | Sub-packaging quantity | 5 Pcs |
| | | Sub-packaging EAN barcode | 8015747210089 |

Part number

TAPH 10.32



Catalogue drawings

