


Part number

# SQV 3245.5



Interlocked switched socket-outlet, SQV series, 3 poles + N + PE, 4 h (yellow), 32 A, 57/100 ÷ 75/130 V, sectionable fuse carrier 10 x 38 mm

| Product description                            |   |
|--|---|
| <b>Product type</b>                            | Interlocked switched socket-outlet  |
| <b>Series</b>                                  | SQV   |
| <b>N. of poles</b>                             | 3 poles + N +  |
| <b>Clock position</b>                          | 4   |
| <b>Size</b>                                    | Socket fixing centre distance 88 x 230 mm   |
| <b>Specification</b>                           | Sectionable fuse carrier 10 x 38 mm   |
| Technical data                                 |   |
| <b>Current</b>                                 | 32 A  |
| <b>Voltage</b>                                 | 57/100 ÷ 75/130 V   |
| <b>IP degree of protection</b>                 | IP55  |
| Further technical details                      |   |
| <b>Weight</b>                                  | 743,00 g  |
| <b>Operating temperature range (min, max)</b>  | -25°C ... +40°C   |
| <b>IK rating (impact degree of protection)</b> | IK08  |

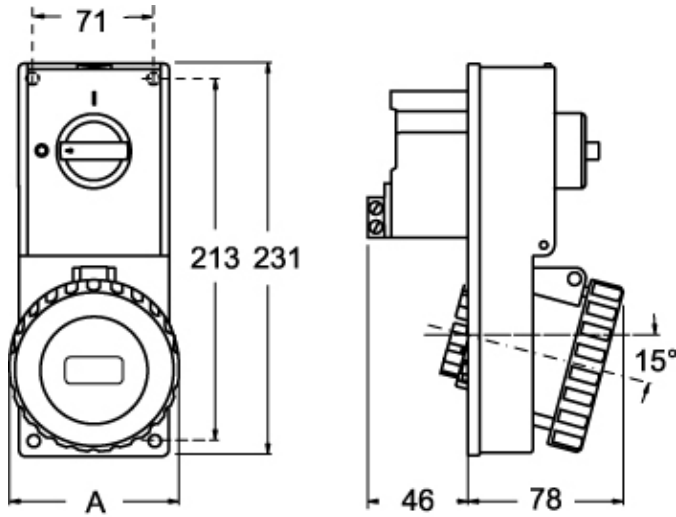
| Material properties              |                                |
|----------------------------------|--------------------------------|
| <b>Colour</b>                    | RAL 7035 grey, RAL 1021 yellow |
| Approvals / Standards            |                                |
| <b>Reference standard</b>        | EN 60309-1, -2 e -4            |
| General ordering information     |                                |
| <b>EAN13 code</b>                | 8015747088497                  |
| Packaging Information            |                                |
| <b>Sub-packaging weight</b>      | 0,74 kg                        |
| <b>Sub-packaging description</b> | Plastic packaging              |
| <b>Sub-packaging quantity</b>    | 1 Pcs                          |
| <b>Sub-packaging EAN barcode</b> | 8015747109475                  |

Part number

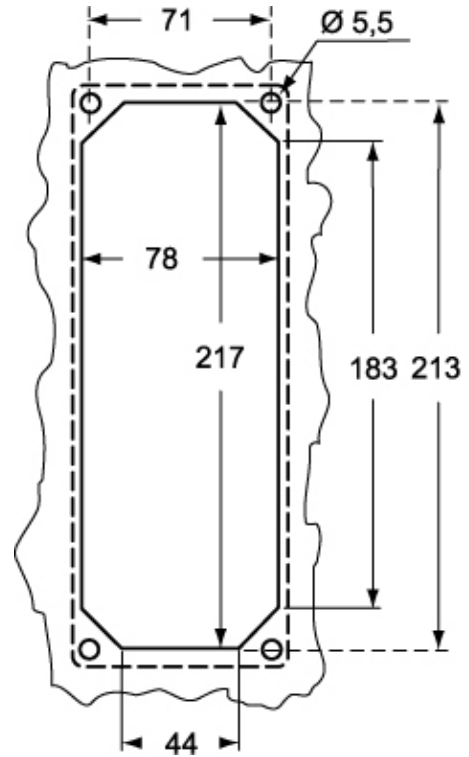
# SQV 3245.5



Catalogue drawings



Catalogue drawings



| SQV.5 |        | A   |
|-------|--------|-----|
| 32A   | 2P+⊕   | 92  |
|       | 3P+⊕   | 92  |
|       | 3P+N+⊕ | 100 |