


Part number

SQV 1633.5



Interlocked switched socket-outlet, SQV series, 2 poles + PE, 3 h (white), 16 A, 50 ÷ 250 V, sectionable fuse carrier 10 x 38 mm

Product description

Product type	Interlocked switched socket-outlet
Series	SQV
N. of poles	2 poles + 
Clock position	3
Specification	Sectionable fuse carrier 10 x 38 mm

Technical data

Current	16 A
Voltage	> 50 ÷ 250 V
IP degree of protection	IP55

Further technical details

Operating temperature range (min, max)	-25°C ... +40°C
IK rating (impact degree of protection)	IK08

Material properties

Colour	RAL 7035 grey, RAL 9010 white
---------------	-------------------------------

Approvals / Standards

Reference standard	EN 60309-1, -2 e -4
---------------------------	---------------------

General ordering information

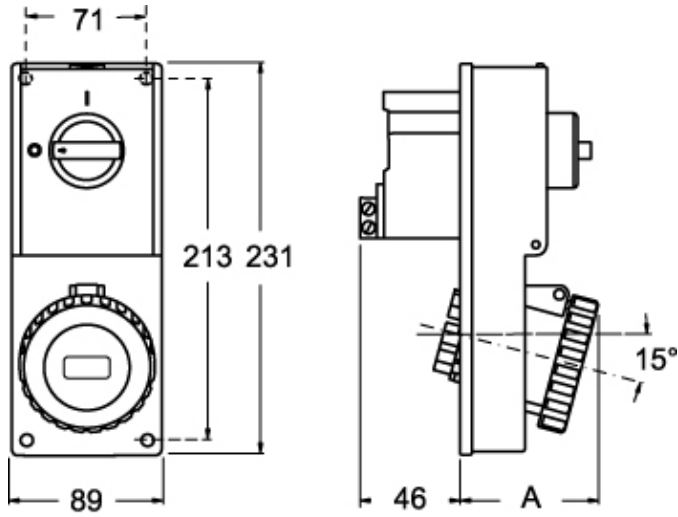
EAN13 code	8015747160209
-------------------	---------------

Part number

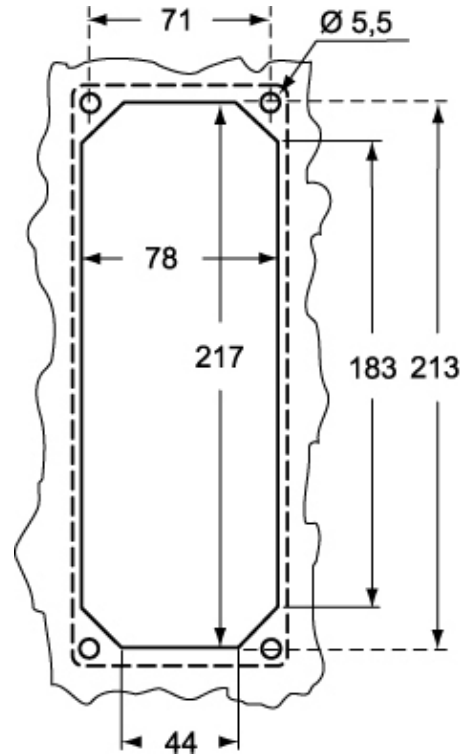
SQV 1633.5



Catalogue drawings



Catalogue drawings



SQV.5		A
16A	2P+⊕	67
	3P+⊕	67
	3P+N+⊕	70