


Part number

# SQV 16104.5



Interlocked switched socket-outlet, SQV series, 3 poles + PE, 10 h (green), 16 A, > 50 V, sectionable fuse carrier 10 x 38 mm

#### Product description

|                       |   |
|-----------------------|---|
| <b>Product type</b>   | Interlocked switched socket-outlet  |
| <b>Series</b>         | SQV   |
| <b>N. of poles</b>    | 3 poles +  |
| <b>Clock position</b> | 10  |
| <b>Specification</b>  | Sectionable fuse carrier 10 x 38 mm   |

#### Technical data

|                                |        |
|--------------------------------|--------|
| <b>Current</b>                 | 16 A   |
| <b>Voltage</b>                 | > 50 V |
| <b>IP degree of protection</b> | IP55   |

#### Further technical details

|  |                 |
|--|-----------------|
| <b>Weight</b>                                  | 590,00 g        |
| <b>Operating temperature range (min, max)</b>  | -25°C ... +40°C |
| <b>IK rating (impact degree of protection)</b> | IK08            |

#### Material properties

|                              |  |
|------------------------------|--|
| <b>Colour</b>                | RAL 7035 grey, RAL 6017 green  |
| <b>RoHs conformity</b>       | Compliant with exemption 6(c): copper alloy containing up to 4% lead by weight |
| <b>China RoHs - EFUP</b>     | 50   |
| <b>REACH SVHC substances</b> | Yes<br>Lead  |
| <b>SCIP number</b>           | F6799547-ab84-42f2-938f-233ba663766d   |

#### Approvals / Standards

|                           |                     |
|---------------------------|---------------------|
| <b>Reference standard</b> | EN 60309-1, -2 e -4 |
|---------------------------|---------------------|

#### General ordering information

|                   |               |
|-------------------|---------------|
| <b>EAN13 code</b> | 8015747087292 |
|-------------------|---------------|

#### Packaging Information

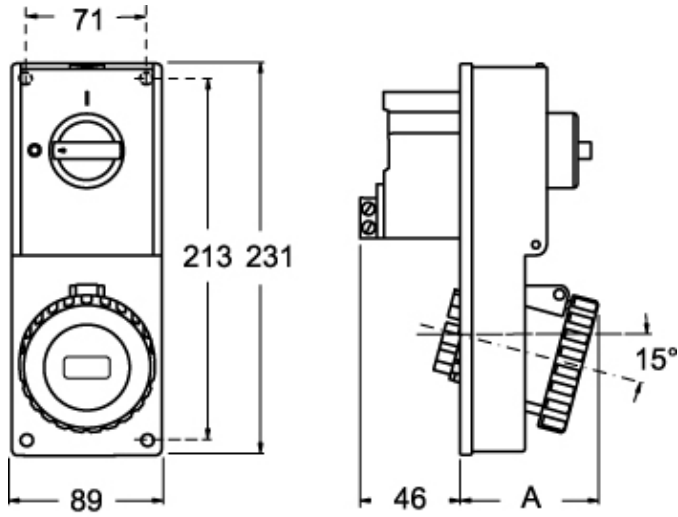
|                                  |                      |
|----------------------------------|----------------------|
| <b>Sub-packaging length</b>      | 116,00 mm            |
| <b>Sub-packaging height</b>      | 103,00 mm            |
| <b>Sub-packaging width</b>       | 230,00 mm            |
| <b>Sub-packaging weight</b>      | 0,59 kg              |
| <b>Sub-packaging volume</b>      | 2,75 dm <sup>3</sup> |
| <b>Sub-packaging description</b> | Carton box           |
| <b>Sub-packaging quantity</b>    | 1 Pcs                |
| <b>Sub-packaging EAN barcode</b> | 8015747087308        |

Part number

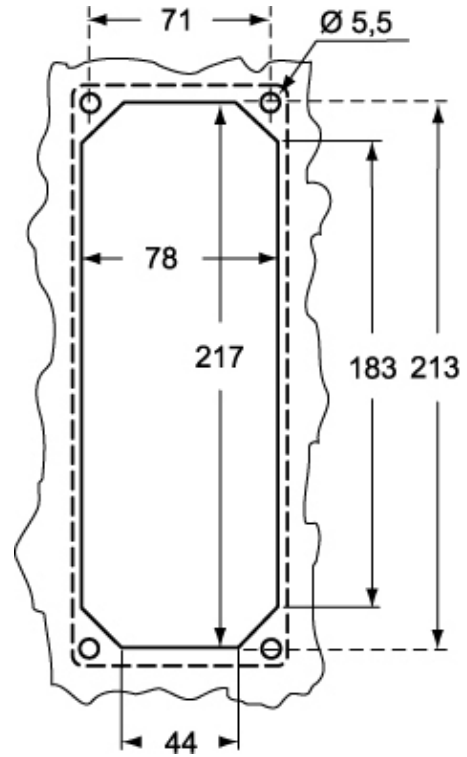
# SQV 16104.5



Catalogue drawings



Catalogue drawings



| SQV.5 |        | A  |
|-------|--------|----|
| 16A   | 2P+⊕   | 67 |
|       | 3P+⊕   | 67 |
|       | 3P+N+⊕ | 70 |