


Part number

# SQE 3294



Interlocked switched socket-outlet, SQE series, 3 poles + PE, 9 h (blue), 32 A, 200 ÷ 250 V, without fuse-carrier

Product description	
<b>Product type</b>	Interlocked switched socket-outlet
<b>Series</b>	SQE
<b>N. of poles</b>	3 poles + 
<b>Clock position</b>	9
<b>Size</b>	Socket fixing centre distance 88 x 230 mm
<b>Specification</b>	Without fuse-carrier
Technical data	
<b>Current</b>	32 A
<b>Voltage</b>	200 ÷ 250 V
<b>IP degree of protection</b>	IP44
Further technical details	
<b>Weight</b>	580,00 g
<b>Operating temperature range (min, max)</b>	-25°C ... +40°C
<b>IK rating (impact degree of protection)</b>	IK08

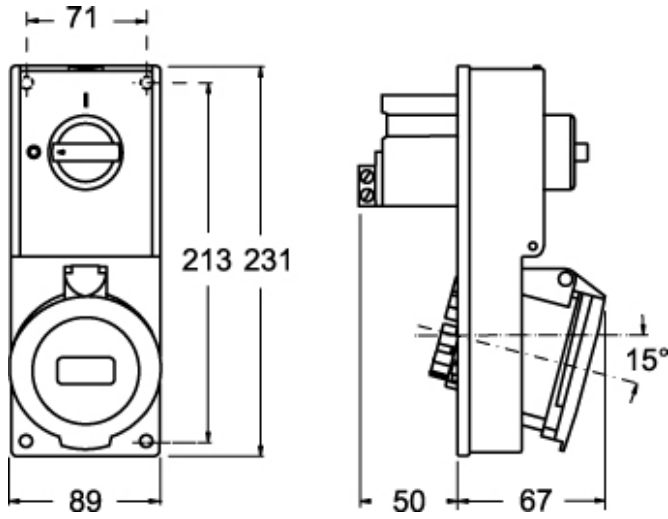
Material properties	
<b>Colour</b>	RAL 7035 grey, RAL 5015 blue
Approvals / Standards	
<b>Reference standard</b>	EN 60309-1, -2 e -4
General ordering information	
<b>EAN13 code</b>	8015747087087
Packaging Information	
<b>Sub-packaging weight</b>	0,58 kg
<b>Sub-packaging description</b>	Carton box
<b>Sub-packaging quantity</b>	1 Pcs
<b>Sub-packaging EAN barcode</b>	8015747109420

Part number

# SQE 3294



Catalogue drawings



Catalogue drawings

