


Part number

SQE 3223



Interlocked switched socket-outlet, SQE series, 2 poles + PE, 2 h (green), 32 A, > 50 V, without fuse-carrier

Product description

Product type	Interlocked switched socket-outlet
Series	SQE
N. of poles	2 poles + 
Clock position	2
Specification	Without fuse-carrier

Technical data

Current	32 A
Voltage	> 50 V
IP degree of protection	IP44

Further technical details

Weight	554,00 g
Operating temperature range (min, max)	-25°C ... +40°C
IK rating (impact degree of protection)	IK08

Material properties

Colour	RAL 7035 grey, RAL 6017 green
RoHs conformity	Compliant with exemption 6(c): copper alloy containing up to 4% lead by weight
China RoHs - EFUP	50
REACH SVHC substances	Yes Lead
SCIP number	Ce861c8d-b979-403b-96d9-80aef6dc281d

Approvals / Standards

Reference standard	EN 60309-1, -2 e -4
---------------------------	---------------------

General ordering information

EAN13 code	8015747086295
-------------------	---------------

Packaging Information

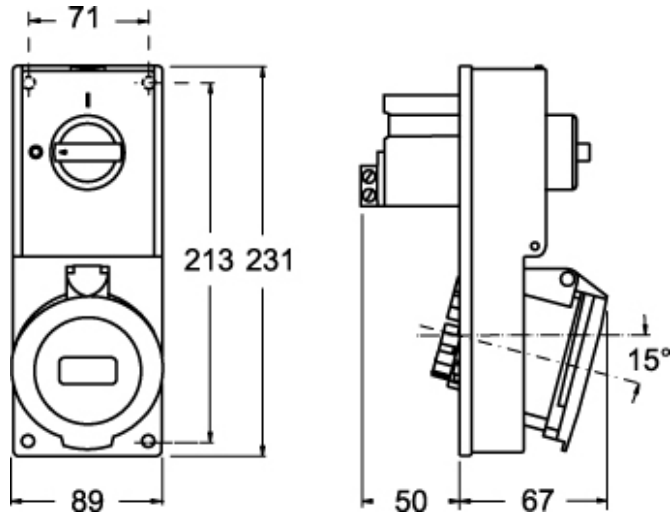
Sub-packaging length	116,00 mm
Sub-packaging height	103,00 mm
Sub-packaging width	230,00 mm
Sub-packaging weight	0,55 kg
Sub-packaging volume	2,75 dm ³
Sub-packaging description	Carton box
Sub-packaging quantity	1 Pcs
Sub-packaging EAN barcode	8015747086301

Part number

SQE 3223



Catalogue drawings



Catalogue drawings

