

Part number

# SIPW 3265 SI



Flush-mounting plug, PLUSO series, 3 poles + N + PE, 6 h (red), 32 A, 200/346 ÷ 240/415 V, with phase inverter

Product description		Material properties	
<b>Product type</b>	Plug Flush-mounting	<b>Colour</b>	RAL 7035 grey, RAL 3000 red
<b>Series</b>	SIPW...SI, PLUSO	<b>RoHs conformity</b>	Compliant with exemption 6(c): copper alloy containing up to 4% lead by weight
<b>Connection type</b>	Screw terminal connection	<b>China RoHs - EFUP</b>	50
<b>N. of poles</b>	3 poles + N +	<b>REACH SVHC substances</b>	Yes Lead
<b>Clock position</b>	6	<b>SCIP number</b>	Ca7de37f-add8-4b77-9861-279c94903ade
<b>Specification</b>	With phase inverter	Approvals / Standards	
Technical data		<b>Reference standard</b>	EN 60309-1 and -2
<b>Current</b>	32 A	General ordering information	
<b>Voltage</b>	200/346 ÷ 240/415 V	<b>EAN13 code</b>	8015747084031
<b>IP degree of protection</b>	IP67	Packaging Information	
Further technical details		<b>Packaging length</b>	355,00 mm
<b>Weight</b>	317,00 g	<b>Packaging height</b>	195,00 mm
<b>Operating temperature range (min, max)</b>	-25°C ... +40°C	<b>Packaging width</b>	325,00 mm
		<b>Packaging weight</b>	3,57 kg
		<b>Packaging volume</b>	22,50 dm <sup>3</sup>
		<b>Packaging description</b>	Carton box
		<b>Packaging quantity</b>	10 Pcs
		<b>Packaging EAN code</b>	8015747084048

Part number

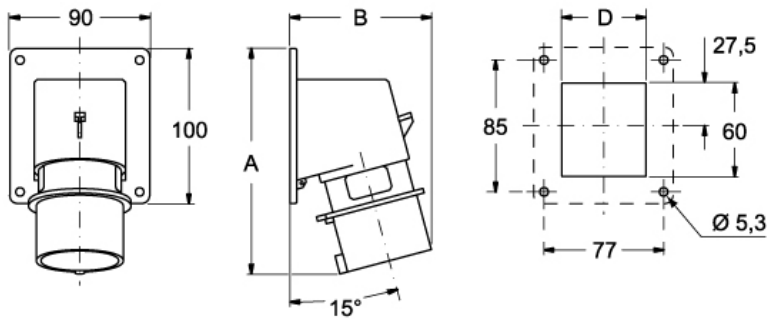
# SIPW 3265 SI



Catalogue drawings

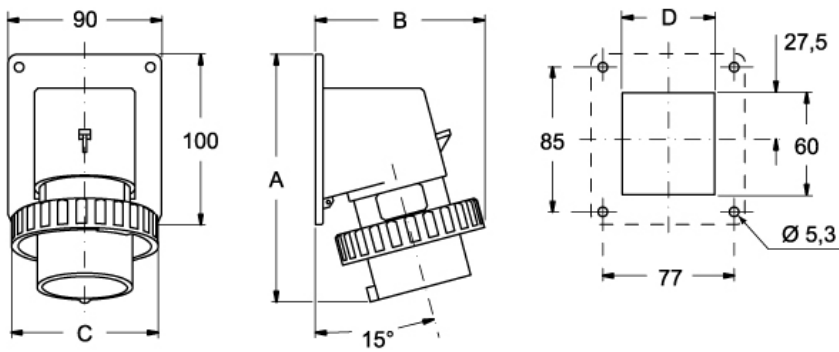
Catalogue drawings

SIP ... SI



	A	B	C
<b>16A</b>	146	93	54
<b>32A</b>	160	106	62

SIPW ... SI



	A	B	C	D
<b>16A</b>	146	99	86	54
<b>32A</b>	160	113	100	62