

Part number

# SIP 3265 SI



Flush-mounting plug, PLUSO series, 3 poles + N + PE, 6 h (red), 32 A, 200/346 ÷ 240/415 V, with phase inverter

#### Product description

|                        |                           |
|------------------------|---------------------------|
| <b>Product type</b>    | Plug<br>Flush-mounting    |
| <b>Series</b>          | SIP...SI, PLUSO           |
| <b>Connection type</b> | Screw terminal connection |
| <b>N. of poles</b>     | 3 poles + N +             |
| <b>Clock position</b>  | 6                         |
| <b>Specification</b>   | With phase inverter       |

#### Technical data

|                                |                     |
|--------------------------------|---------------------|
| <b>Current</b>                 | 32 A                |
| <b>Voltage</b>                 | 200/346 ÷ 240/415 V |
| <b>IP degree of protection</b> | IP44                |

#### Further technical details

|   |                 |
|---|-----------------|
| <b>Weight</b>                                 | 270,50 g        |
| <b>Operating temperature range (min, max)</b> | -25°C ... +40°C |

#### Material properties

|                              |  |
|------------------------------|--|
| <b>Colour</b>                | RAL 7035 grey, RAL 3000 red  |
| <b>RoHs conformity</b>       | Compliant with exemption 6(c): copper alloy containing up to 4% lead by weight |
| <b>China RoHs - EFUP</b>     | 50   |
| <b>REACH SVHC substances</b> | Yes<br>Lead  |
| <b>SCIP number</b>           | Ca7de37f-add8-4b77-9861-279c94903ade   |

#### Approvals / Standards

|                           |                   |
|---------------------------|-------------------|
| <b>Reference standard</b> | EN 60309-1 and -2 |
|---------------------------|-------------------|

#### General ordering information

|                   |               |
|-------------------|---------------|
| <b>EAN13 code</b> | 8015747083911 |
|-------------------|---------------|

#### Packaging Information

|                              |                       |
|------------------------------|-----------------------|
| <b>Packaging length</b>      | 355,00 mm             |
| <b>Packaging height</b>      | 195,00 mm             |
| <b>Packaging width</b>       | 325,00 mm             |
| <b>Packaging weight</b>      | 3,22 kg               |
| <b>Packaging volume</b>      | 22,50 dm <sup>3</sup> |
| <b>Packaging description</b> | Carton box            |
| <b>Packaging quantity</b>    | 10 Pcs                |
| <b>Packaging EAN code</b>    | 8015747083928         |

Part number

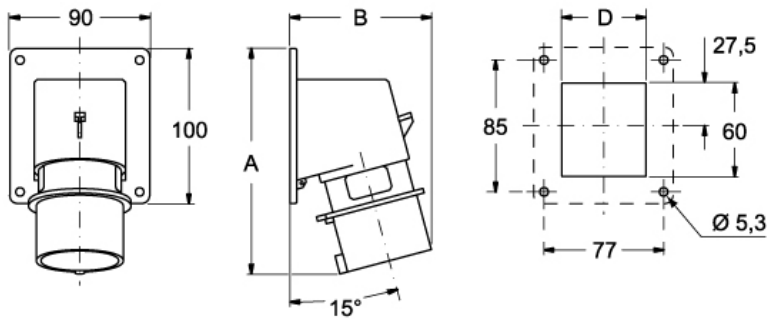
# SIP 3265 SI



Catalogue drawings

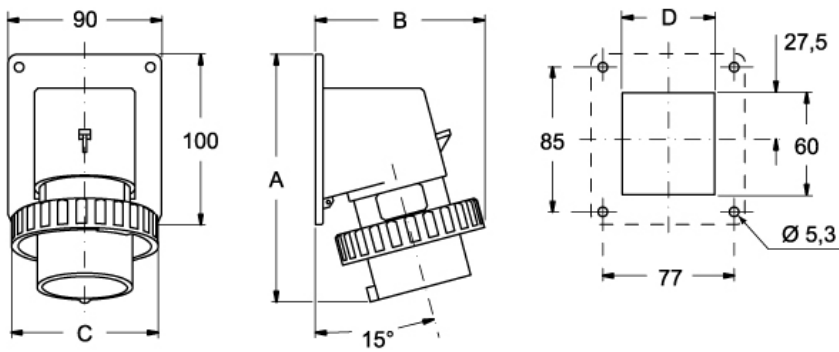
Catalogue drawings

**SIP ... SI**



|            | A   | B   | C  |
|------------|-----|-----|----|
| <b>16A</b> | 146 | 93  | 54 |
| <b>32A</b> | 160 | 106 | 62 |

**SIPW ... SI**



|            | A   | B   | C   | D  |
|------------|-----|-----|-----|----|
| <b>16A</b> | 146 | 99  | 86  | 54 |
| <b>32A</b> | 160 | 113 | 100 | 62 |