


Part number

PEW 1665 SM



Wall-mounting plug, PLUSO series, 3 poles + N + PE, 6 h (red), 16 A, 380 ÷ 415 V

Product description

Product type	Plug Wall-mounting
Series	PEW...SM, PLUSO
Connection type	Screw terminal connection
N. of poles	3 poles + N + 
Clock position	6

Technical data

Current	16 A
Voltage	380 ÷ 415 V
IP degree of protection	IP67

Further technical details

Weight	408,00 g
Operating temperature range (min, max)	-25°C ... +40°C

Material properties

Colour	RAL 7035 grey, RAL 3000 red
RoHs conformity	Compliant with exemption 6(c): copper alloy containing up to 4% lead by weight
China RoHs - EFUP	50
REACH SVHC substances	Yes Lead
SCIP number	Ca7de37f-add8-4b77-9861-279c94903ade

Approvals / Standards

Reference standard	EN 60309-1 and -2
---------------------------	-------------------

General ordering information

EAN13 code	8015747073097
-------------------	---------------

Packaging Information

Packaging weight	4,60 kg
Packaging volume	36,36 dm ³
Packaging description	Carton box
Packaging quantity	10 Pcs
Packaging EAN code	8015747073103

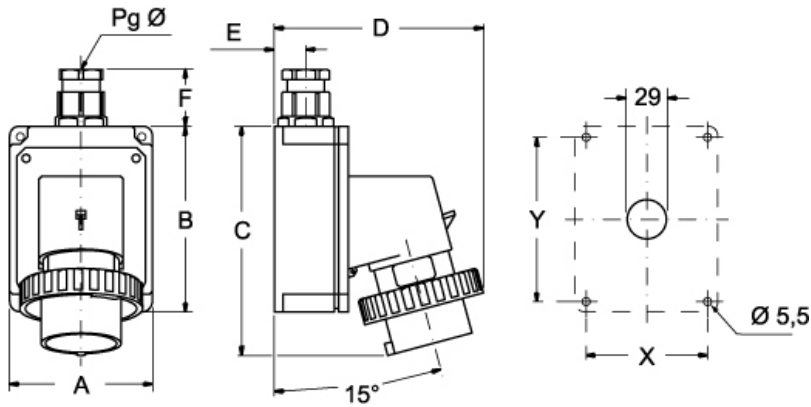
Part number

PEW 1665 SM



Catalogue drawings

(16 / 32A) PEW ... SM



PEW ... SM	A	B	C	D	E	F	X	Y	Pg Ø	
16A	2P+⊕	75	115	144	126	19	35	65	105	16
	3P+⊕	75	115	144	134	19	35	65	105	16
	3P+N+⊕	100	130	164	145	22	42	85	115	21
32A	2P+⊕	100	130	178	154	22	42	85	115	21
	3P+⊕	100	130	178	154	22	42	85	115	21
	3P+N+⊕	100	130	178	160	22	42	85	115	21