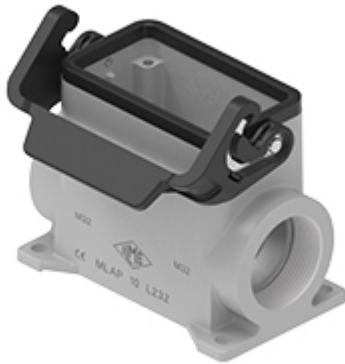


Part number

# MLAP 10 L232



Surface mounting housing, IL-BRID series, with 1 lever, M32 x 2 cable entry, size "57.27", high construction

#### Product description

|                      |                             |
|----------------------|-----------------------------|
| <b>Product type</b>  | Surface mounting housing    |
| <b>Series</b>        | IL-BRID                     |
| <b>Closing type</b>  | With 1 lever                |
| <b>Size</b>          | Size 57.27                  |
| <b>Cable entry</b>   | With cable entry<br>M32 x 2 |
| <b>Specification</b> | High construction           |

#### Technical data

|                                |                    |
|--------------------------------|--------------------|
| <b>IP degree of protection</b> | IP65 / IP66 / IP69 |
|--------------------------------|--------------------|

#### Further technical details

|   |                |
|---|----------------|
| <b>Weight</b>                                 | 1,00 g         |
| <b>Operating temperature range (min, max)</b> | -40°C...+125°C |

#### Material properties

|                              |  |
|------------------------------|--|
| <b>Other materials</b>       | Lever: Polyamide (PA) and Stainless steel core<br>Gasket NBR |
| <b>Colour</b>                | RAL 7040 grey  |
| <b>RoHs conformity</b>       | Compliant  |
| <b>China RoHs - EFUP</b>     | E  |
| <b>REACH SVHC substances</b> | No   |

#### General ordering information

|                   |               |
|-------------------|---------------|
| <b>EAN13 code</b> | 8015747287494 |
| <b>eCl@ss 8.1</b> | 27440202      |
| <b>ETIM 7.0</b>   | EC000437      |

#### Packaging Information

|                                  |                       |
|----------------------------------|-----------------------|
| <b>Packaging length</b>          | 475,00 mm             |
| <b>Packaging height</b>          | 200,00 mm             |
| <b>Packaging width</b>           | 150,00 mm             |
| <b>Packaging volume</b>          | 14,25 dm <sup>3</sup> |
| <b>Packaging description</b>     | Carton box            |
| <b>Packaging quantity</b>        | 10 Pcs                |
| <b>Packaging EAN code</b>        | 8015747194730         |
| <b>Sub-packaging description</b> | Plastic packaging     |
| <b>Sub-packaging quantity</b>    | 5 Pcs                 |
| <b>Sub-packaging EAN barcode</b> | 8015747194747         |

Part number

# MLAP 10 L232



Catalogue drawings

