

Part number

MKAS AP25



Angled surface mounting housing, EMC series, with 1 lever, M25 cable entry, size "21.21"

Product description	
Product type	Angled surface mounting housing
Series	EMC
Closing type	With 1 lever
Size	Size "21.21"
Cable entry	With cable entry M25
Technical data	
IP degree of protection	IP44 - IP66 / IP67 / IP69 with CKR 65 (D)
Further technical details	
Operating temperature range (min, max)	-40°C...+125°C

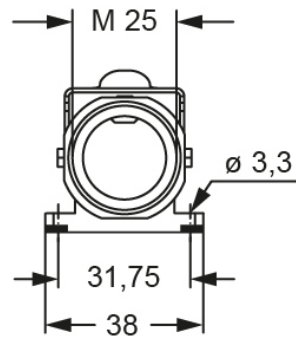
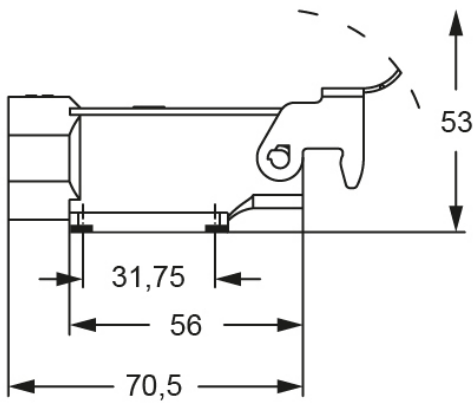
Material properties	
Main material	Zinc die-cast
Other materials	Lever: Galvanized steel Gasket: Conductive elastomer
Colour	RAL 7040 grey
RoHs conformity	Compliant
China RoHs - EFUP	E
REACH SVHC substances	No
Approvals / Standards	
Certifications	DNV, BV
UL	ECBT2
cUL	ECBT8
General ordering information	
EAN13 code	8015747259842
eCl@ss 8.1	27440202
ETIM 7.0	EC000437
Packaging Information	
Sub-packaging length	210,00 mm
Sub-packaging height	40,00 mm
Sub-packaging width	175,00 mm
Sub-packaging volume	1,47 dm ³
Sub-packaging description	Carton box
Sub-packaging quantity	10 Pcs
Sub-packaging EAN barcode	8015747284066

Part number

MKAS AP25



Catalogue drawings



Catalogue drawings

