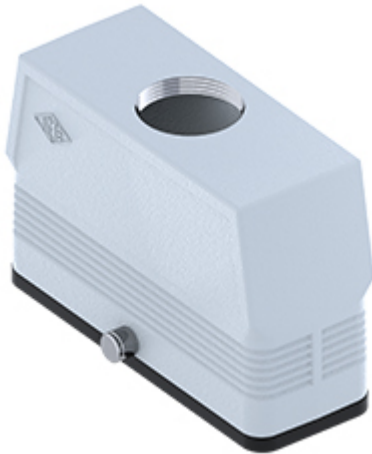


Part number

# MFV 24 GYC40



Hood, CENTRAL LEVER series, with 2 pegs, M40 top cable entry without adapter, size "104.27", high construction

## Product description

<b>Product type</b>	Hood
<b>Series</b>	CENTRAL LEVER
<b>Closing type</b>	With 2 pegs
<b>Size</b>	Size 104.27
<b>Cable entry</b>	Top cable entry M40
<b>Specification</b>	High construction

## Technical data

<b>IP degree of protection</b>	IP65
--------------------------------	------

## Further technical details

<b>Operating temperature range (min, max)</b>	-40°C...+125°C
---	----------------

## Material properties

<b>Other materials</b>	Gasket: NBR
<b>Colour</b>	RAL 7040 grey
<b>RoHs conformity</b>	Compliant
<b>China RoHs - EFUP</b>	E
<b>REACH SVHC substances</b>	No

## Approvals / Standards

<b>UL</b>	ECBT2
<b>cUL</b>	ECBT8

## General ordering information

<b>EAN13 code</b>	8015747264891
<b>eCl@ss 8.1</b>	27440202
<b>ETIM 7.0</b>	EC000437

## Packaging Information

<b>Sub-packaging description</b>	Plastic packaging
<b>Sub-packaging quantity</b>	5 Pcs
<b>Sub-packaging EAN barcode</b>	8015747264907

Part number

# MFV 24 GYC40



Catalogue drawings

