

Part number

M7P 06 LS220



Surface mounting housing, V-TYPE series, with 1 lever, M20 x 2 cable entry, size "44.27", with metal cover

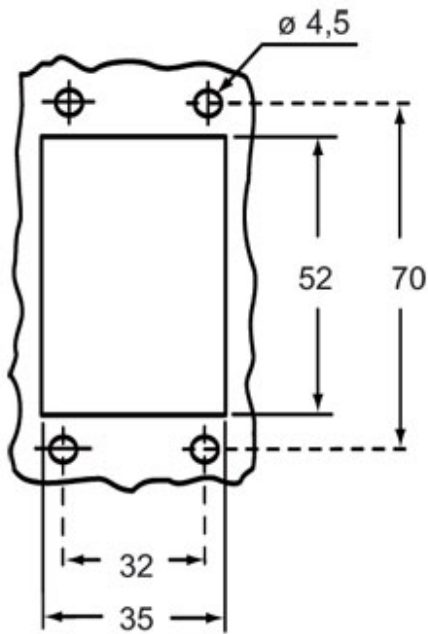
Product description		Material properties	
Product type	Surface mounting housing	Other materials	Lever: Stainless steel Gasket: NBR
Series	V-TYPE	Colour	RAL 7040 grey
Closing type	With 1 lever	RoHs conformity	Compliant
Size	Size 44.27	China RoHs - EFUP	E
Cable entry	With cable entry M20 x 2	REACH SVHC substances	No
Specification	With metal cover		
Technical data		Approvals / Standards	
IP degree of protection	IP66 / IP67 / IP69	Certifications	DNV, BV
		UL	ECBT2
		cUL	ECBT8
Further technical details		General ordering information	
Weight	248,00 g	EAN13 code	8015747235754
Operating temperature range (min, max)	-40°C...+125°C	eCl@ss 8.1	27440202
		ETIM 7.0	EC000437
		Packaging Information	
		Packaging length	355,00 mm
		Packaging height	110,00 mm
		Packaging width	185,00 mm
		Packaging weight	2,61 kg
		Packaging volume	7,22 dm ³
		Packaging description	Carton box
		Packaging quantity	10 Pcs
		Packaging EAN code	8015747235822
		Sub-packaging weight	1,31 kg
		Sub-packaging description	Plastic packaging
		Sub-packaging quantity	5 Pcs
		Sub-packaging EAN barcode	8015747235839

Part number

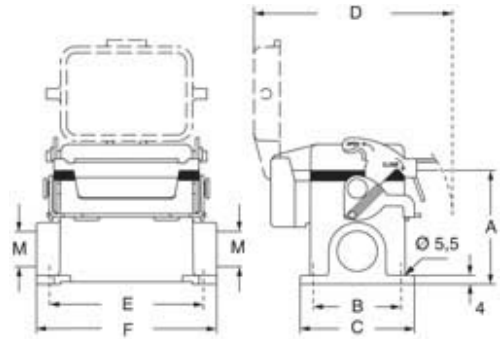
M7P 06 LS220



Catalogue drawings



Catalogue drawings



type	A	B	C	D	E	F
M7P 06 LS	53	40	52	91	70	82
M7AP 06 LS	73	45	57	91	70	82