

Part number

M7APE 06 L32



Surface mounting housing, E-Xtreme® V-TYPE series, with 1 lever, M32 cable entry, size "44.27", high construction

Product description	
Product type	Surface mounting housing
Series	E-Xtreme® V-TYPE
Closing type	With 1 lever
Size	Size 44.27
Cable entry	With cable entry M32
Specification	High construction
Technical data	
IP degree of protection	IP66 / IP67 / IP69
Further technical details	
Weight	601,00 g
Operating temperature range (min, max)	-40°C...+125°C

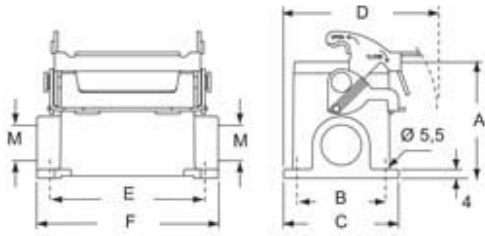
Material properties	
Other materials	Lever: Stainless steel Gasket: FKM
Colour	RAL 7016 grey
RoHS conformity	Compliant
China RoHS - EFUP	E
REACH SVHC substances	No
Approvals / Standards	
Certifications	DNV, BV
UL	ECBT2
cUL	ECBT8
General ordering information	
EAN13 code	8015747254076
eCl@ss 8.1	27440202
ETIM 7.0	EC000437
Packaging Information	
Packaging length	475,00 mm
Packaging height	200,00 mm
Packaging width	150,00 mm
Packaging weight	6,02 kg
Packaging volume	14,25 dm³
Packaging description	Carton box
Packaging quantity	10 Pcs
Packaging EAN code	8015747266451
Sub-packaging weight	3,01 kg
Sub-packaging description	Plastic packaging
Sub-packaging quantity	5 Pcs
Sub-packaging EAN barcode	8015747264778

Part number

M7APE 06 L32



Catalogue drawings



type	A	B	C	D	E	F
M7PE 06 L	53	40	52	70	70	82
M7APE 06 L	73	45	57	72,5	70	82