

Part number

# FM 910 RC



Cover, FM series, reduction for domestic use  
(GW 27401 or BTCQ 25502)

#### Product description

<b>Product type</b>	Cover
<b>Series</b>	FM
<b>Size</b>	90 x 100 mm
<b>Specification</b>	Reduction for domestic use (GW 27401 or BTCQ 25502)

#### Further technical details

<b>Weight</b>	35,00 g
<b>Operating temperature range (min, max)</b>	-40°C ... +125°C

#### Material properties

<b>Colour</b>	RAL 7035 grey
---------------	---------------

#### General ordering information

<b>EAN13 code</b>	8015747048002
-------------------	---------------

#### Packaging Information

<b>Sub-packaging weight</b>	0,04 kg
<b>Sub-packaging description</b>	Plastic packaging
<b>Sub-packaging quantity</b>	1 Pcs
<b>Sub-packaging EAN barcode</b>	8015747048019

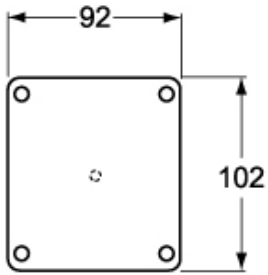
Part number

# FM 910 RC

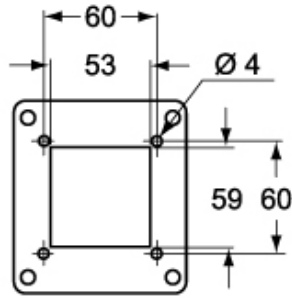


Catalogue drawings

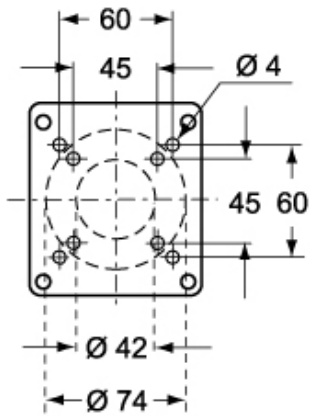
**FM 910 CVU**



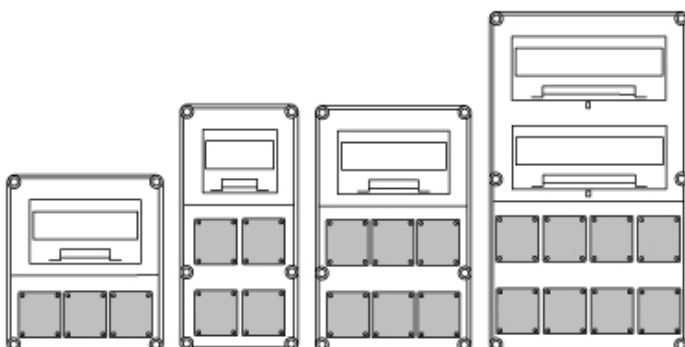
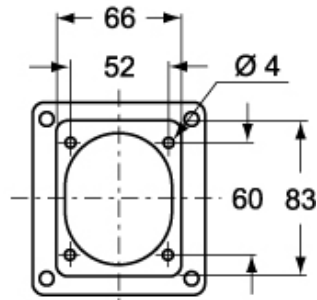
**FM 910 RC**



**FM 910 CV**



**FM 910 RI**



---