

Part number

FM 416



Screws kit for mounting of PQ-PI-PQF-PIF sockets, FM series



Product description

Product type Screws kit for mounting of PQ-PI-PQF-PIF sockets

Series FM

Further technical details

Weight 6,50 g

Operating temperature range (min, max) -40°C ... +125°C

Material properties

Colour RAL 7035 grey

General ordering information

EAN13 code 8015747047722

Packaging Information

Packaging weight 0,17 kg

Packaging description Carton box

Packaging quantity 10 Pcs

Packaging EAN code 8015747099387

Sub-packaging length 60,00 mm

Sub-packaging height 75,00 mm

Sub-packaging width 75,00 mm

Sub-packaging weight 0,02 kg

Sub-packaging volume 0,34 dm³

Sub-packaging description Plastic bag

Sub-packaging quantity 1 Pcs

Sub-packaging EAN barcode 8015747099394

Part number FM 416



Catalogue drawings

FM complementary parts and accessories



Box system carrying handle
Climbing irons for box fixing



DIN-rail EN 60715 - Insulated terminal block
Collar - Screws kit - Adhesive label



Description

Part No.

Part No.

Box system carrying handle
- For 3236, 2451, 3251, 3221 and 4272 boards

FM 32 MT

Climbing irons for external wall mounting
- For 3236, 2451, 3251, 3221 and 4272 boards

BC SFT

Sized DIN-rail EN 60715 (35 mm)
With back plates for the positioning at different depths and fixing screws
- For 2451 boards
- For 3236, 3251, 3221 boards
- For 4272 boards

FM GD 18
FM GD 25
FM GD 35

Insulated terminal block, 3 P 25 mm² + 10 P 10 mm²
- For neutral and/or ground, compliant with EN 60998-2-1, stackable (up to 2 units)

FM 2510 MI

collar
- for format 1043 box system

FM 1043 CO

screws kit
- for mounting sockets PQ-PI-PQF-PIF series

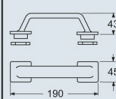
FM 416

adhesive label
- for the identification of the mounted modular devices

FM 18 ET

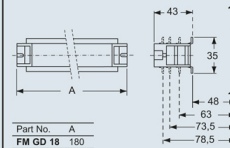
Dimensions in mm

FM 32 MT

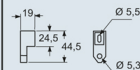


Dimensions in mm

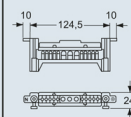
FM GDxx



BC SFT



FM 2510 MI



Dimensions indicated are not binding and may be changed without prior notice.