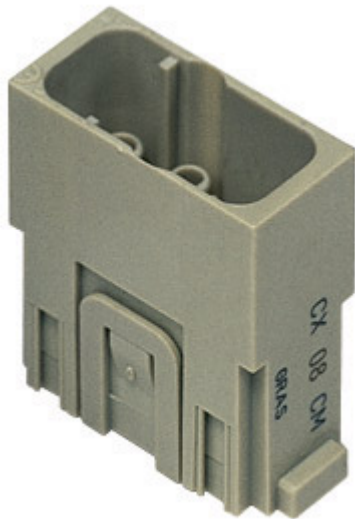


Part number

CX 08 CM



Male modular insert, Mixo series, crimp connection, 8 poles, 1 module, 16 A 400 V 6 kV 3

Product description

| | |
|------------------------|---|
| Product type | Modular insert |
| Series | Mixo |
| Connection type | Crimp connection |
| Gender | Male |
| N. of poles | 8 poles |
| Size | 1 module |
| Specification | Standard & HNM (High Number of Matings) |

Technical data

| | |
|--|--|
| Current | 16 A |
| Voltage | 400 V |
| Rated impulse withstand voltage | 6 kV |
| Pollution degree | 3 |
| Rated voltage according to UL/CSA | 600 V |
| IP degree of protection | IP20 without enclosure, IP65/IP66/IP68/IP69 with enclosure |

Further technical details

| | |
|---|------------------------------------|
| Characteristics according to EN 61984 | 16A 400V 6kV 3; 16A 400/690V 6kV 2 |
| Insulation resistance | ≥ 10 GΩ |
| Contact resistance | ≤ 1 mΩ |
| Weight | 8,60 g |
| Operating temperature range (min, max) | -40 °C ... +125 °C |
| UL 94 flammability rating | V-0 |

Material properties

| | |
|------------------------------|---------------|
| Main material | Polycarbonate |
| Colour | RAL 7032 grey |
| RoHs conformity | Compliant |
| China RoHs - EFUP | E |
| REACH SVHC substances | No |

Approvals / Standards

| | |
|---------------------------|------------------------|
| Reference standard | EN 61984:2009-06 |
| Certifications | CSA, CQC, DNV, BV, EAC |

General ordering information

| | |
|-------------------|---------------|
| EAN13 code | 8015747129220 |
| eCl@ss 8.1 | 27440205 |
| ETIM 7.0 | EC000438 |

Packaging Information

| | |
|----------------------------------|----------------------|
| Packaging length | 180,00 mm |
| Packaging height | 120,00 mm |
| Packaging width | 155,00 mm |
| Packaging weight | 0,71 kg |
| Packaging volume | 3,35 dm ³ |
| Packaging description | Carton box |
| Packaging quantity | 60 Pcs |
| Packaging EAN code | 8015747221306 |
| Sub-packaging length | 35,00 mm |
| Sub-packaging height | 40,00 mm |
| Sub-packaging width | 155,00 mm |
| Sub-packaging weight | 0,12 kg |
| Sub-packaging volume | 0,22 dm ³ |
| Sub-packaging description | Carton tray |
| Sub-packaging quantity | 10 Pcs |
| Sub-packaging EAN barcode | 8015747129251 |

Part number

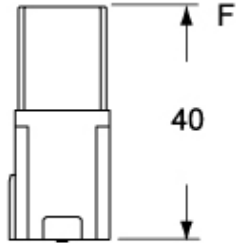
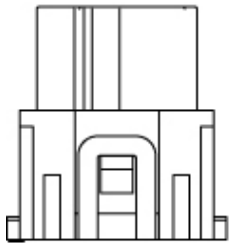
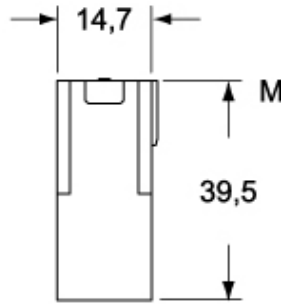
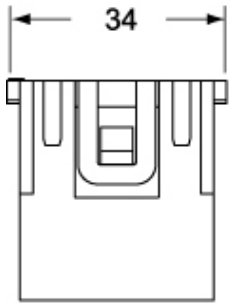
CX 08 CM



Catalogue drawings

Catalogue drawings

CX 08 CM



CX 08 CF

