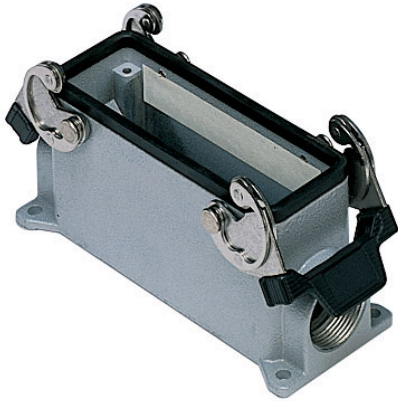


Part number

CMP 16.2



Surface mounting housing, 830V series, with 2 levers, Pg21 x 2 cable entry, size "104.27"



| Product description | | Material properties | |
|---|------------------------------|----------------------------------|-------------------|
| Product type | Surface mounting housing | Colour | RAL 7040 grey |
| Series | 830V | RoHs conformity | Compliant |
| Closing type | With 2 levers | China RoHs - EFUP | E |
| Size | Size 104.27 | REACH SVHC substances | No |
| Cable entry | With cable entry Pg21 x 2 | Approvals / Standards | |
| Technical data | | Certifications | DNV, BV |
| IP degree of protection | IP65 / IP66 / IP69 | UL | ECBT2 |
| Further technical details | | cUL | ECBT8 |
| Weight | 377,00 g | General ordering information | |
| Operating temperature range (min, max) | -40°C...+125°C | EAN13 code | 8015747031707 |
| | | Packaging Information | |
| | | Sub-packaging weight | 1,89 kg |
| | | Sub-packaging description | Plastic packaging |
| | | Sub-packaging quantity | 5 Pcs |
| | | Sub-packaging EAN barcode | 8015747031714 |

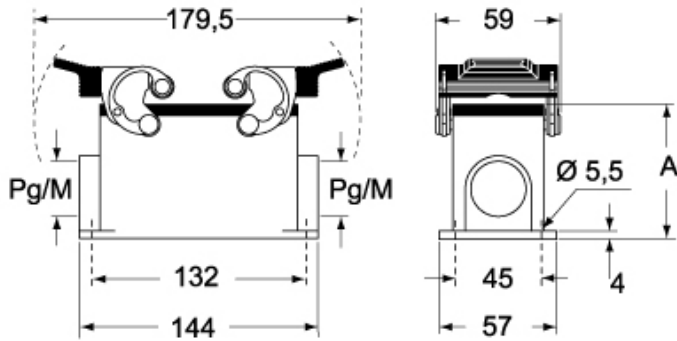
Part number

CMP 16.2

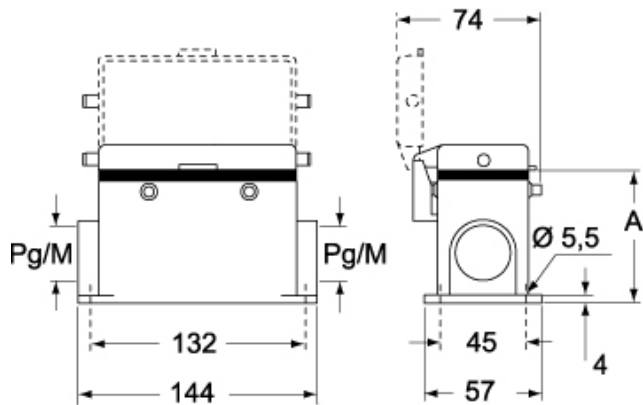


Catalogue drawings

CMP CMAP - MMP MMAP



CMP CS/CP CMAP CS/CP - MMP CS/CP MMAP CS/CP



| | A |
|--------------------------|----------|
| CMP / MMP | 63 |
| CMAP / MMAP | 80 |
| CMP CS / MMP CS | 63 |
| CMAP CS / MMAP CS | 80 |
| CMP CP / MMP CP | 63 |
| CMAP CP / MMAP CP | 80 |