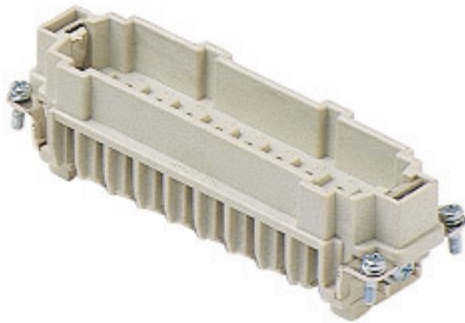



Part number

# CMCEM 16



Male insert, CMCE series, crimp connection,  
16 + 2 poles + PE, 16 A 400/690 V 6 kV 3 / 16  
A 500 V 6 kV 3, size "104.27"

## Product description

|                        |  |
|------------------------|--|
| <b>Product type</b>    | Insert   |
| <b>Series</b>          | CMCE   |
| <b>Connection type</b> | Crimp connection   |
| <b>Gender</b>          | Male   |
| <b>N. of poles</b>     | 16 poles +  |
| <b>Auxiliary poles</b> | 2 poles  |
| <b>Size</b>            | Size 104.27  |

## Technical data

|  |  |
|--|--|
| <b>Current</b>                           | 16 A   |
| <b>Voltage</b>                           | 400 - 690 V                                      |
| <b>Rated impulse withstand voltage</b>   | 6 kV   |
| <b>Pollution degree</b>                  | 3  |
| <b>Rated voltage according to UL/CSA</b> | 600 V  |
| <b>IP degree of protection</b>           | IP20 without enclosure, IP65/IP66 with enclosure |

## Further technical details

|   |   |
|---|---|
| <b>Characteristics according to EN 61984</b>  | 16A 830V 8kV 3 (aux: 16A 500V 6kV 3); 16A 1000V 8kV 2 (power contacts only) |
| <b>Mating cycles</b>                          | ≥ 500   |
| <b>Insulation resistance</b>                  | ≥ 10 GΩ   |
| <b>Contact resistance</b>                     | ≤ 1 mΩ  |
| <b>Weight</b>                                 | 67,00 g   |
| <b>Operating temperature range (min, max)</b> | -40 °C ... +125 °C  |
| <b>UL 94 flammability rating</b>              | V-0   |

## Material properties

|                              |                    |
|------------------------------|--------------------|
| <b>Main material</b>         | Polycarbonate (PC) |
| <b>Colour</b>                | RAL 7032 grey      |
| <b>RoHS conformity</b>       | Compliant          |
| <b>China RoHS - EFUP</b>     | E                  |
| <b>REACH SVHC substances</b> | No                 |

## Approvals / Standards

|                           |                        |
|---------------------------|------------------------|
| <b>Reference standard</b> | EN 61984:2009-06       |
| <b>Certifications</b>     | CSA, CQC, DNV, BV, EAC |
| <b>UL</b>                 | ECBT2                  |

## General ordering information

|                   |               |
|-------------------|---------------|
| <b>EAN13 code</b> | 8015747136150 |
| <b>ETIM 7.0</b>   | EC000438      |

## Packaging Information

|                                  |                      |
|----------------------------------|----------------------|
| <b>Packaging length</b>          | 270,00 mm            |
| <b>Packaging height</b>          | 75,00 mm             |
| <b>Packaging width</b>           | 180,00 mm            |
| <b>Packaging weight</b>          | 2,37 kg              |
| <b>Packaging volume</b>          | 3,65 dm <sup>3</sup> |
| <b>Packaging description</b>     | Carton box           |
| <b>Packaging quantity</b>        | 30 Pcs               |
| <b>Packaging EAN code</b>        | 8015747136297        |
| <b>Sub-packaging length</b>      | 113,00 mm            |
| <b>Sub-packaging height</b>      | 36,00 mm             |
| <b>Sub-packaging width</b>       | 180,00 mm            |
| <b>Sub-packaging weight</b>      | 0,40 kg              |
| <b>Sub-packaging volume</b>      | 0,73 dm <sup>3</sup> |
| <b>Sub-packaging description</b> | Carton tray          |
| <b>Sub-packaging quantity</b>    | 5 Pcs                |
| <b>Sub-packaging EAN barcode</b> | 8015747136303        |

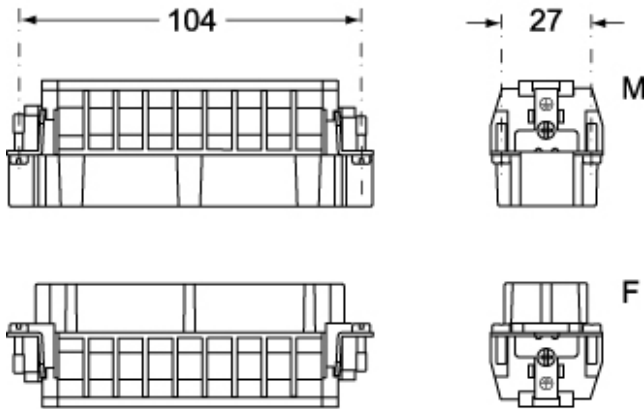
Part number

# CMCEM 16

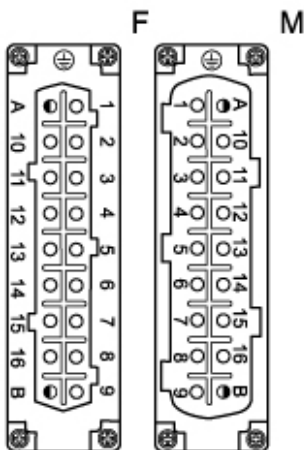


Catalogue drawings

## CMCEM 16



## CMCEF 16



Catalogue drawings

