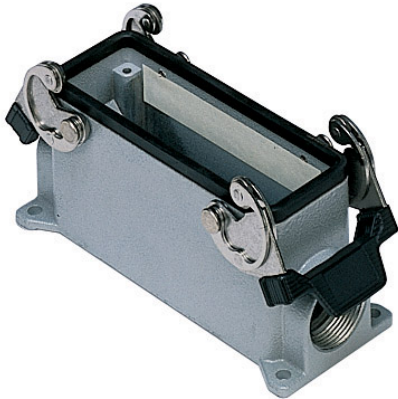


Part number

CMAP 16.29



Surface mounting housing, 830V series, with 2 levers, Pg29 cable entry, size "104.27", high construction



Product description

| | |
|----------------------|--------------------------|
| Product type | Surface mounting housing |
| Series | 830V |
| Closing type | With 2 levers |
| Size | Size 104.27 |
| Cable entry | With cable entry Pg29 |
| Specification | High construction |

Technical data

| | |
|--------------------------------|--------------------|
| IP degree of protection | IP65 / IP66 / IP69 |
|--------------------------------|--------------------|

Further technical details

| | |
|---|----------------|
| Weight | 466,00 g |
| Operating temperature range (min, max) | -40°C...+125°C |

Material properties

| | |
|------------------------------|---------------|
| Colour | RAL 7040 grey |
| RoHs conformity | Compliant |
| China RoHs - EFUP | E |
| REACH SVHC substances | No |

Approvals / Standards

| | |
|-----------------------|---------|
| Certifications | DNV, BV |
| UL | ECBT2 |
| cUL | ECBT8 |

General ordering information

| | |
|-------------------|---------------|
| EAN13 code | 8015747029605 |
|-------------------|---------------|

Packaging Information

| | |
|----------------------------------|-------------------|
| Sub-packaging weight | 2,33 kg |
| Sub-packaging description | Plastic packaging |
| Sub-packaging quantity | 5 Pcs |
| Sub-packaging EAN barcode | 8015747029612 |

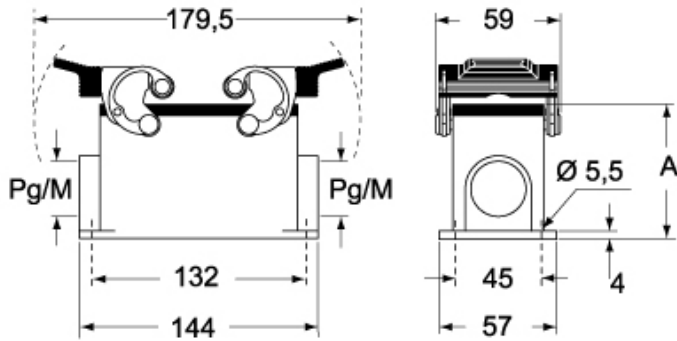
Part number

CMAP 16.29

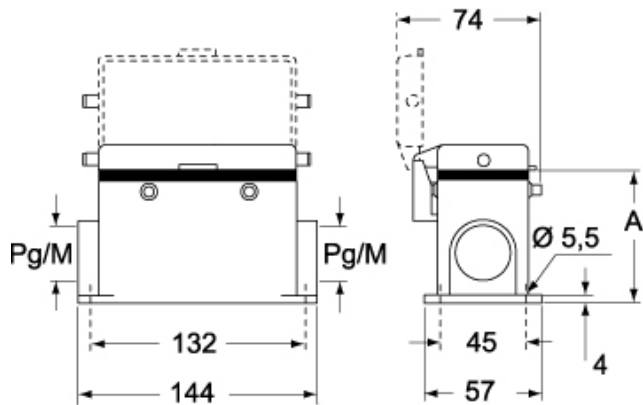


Catalogue drawings

CMP CMAP - MMP MMAP



CMP CS/CP CMAP CS/CP - MMP CS/CP MMAP CS/CP



| | A |
|--------------------------|----------|
| CMP / MMP | 63 |
| CMAP / MMAP | 80 |
| CMP CS / MMP CS | 63 |
| CMAP CS / MMAP CS | 80 |
| CMP CP / MMP CP | 63 |
| CMAP CP / MMAP CP | 80 |